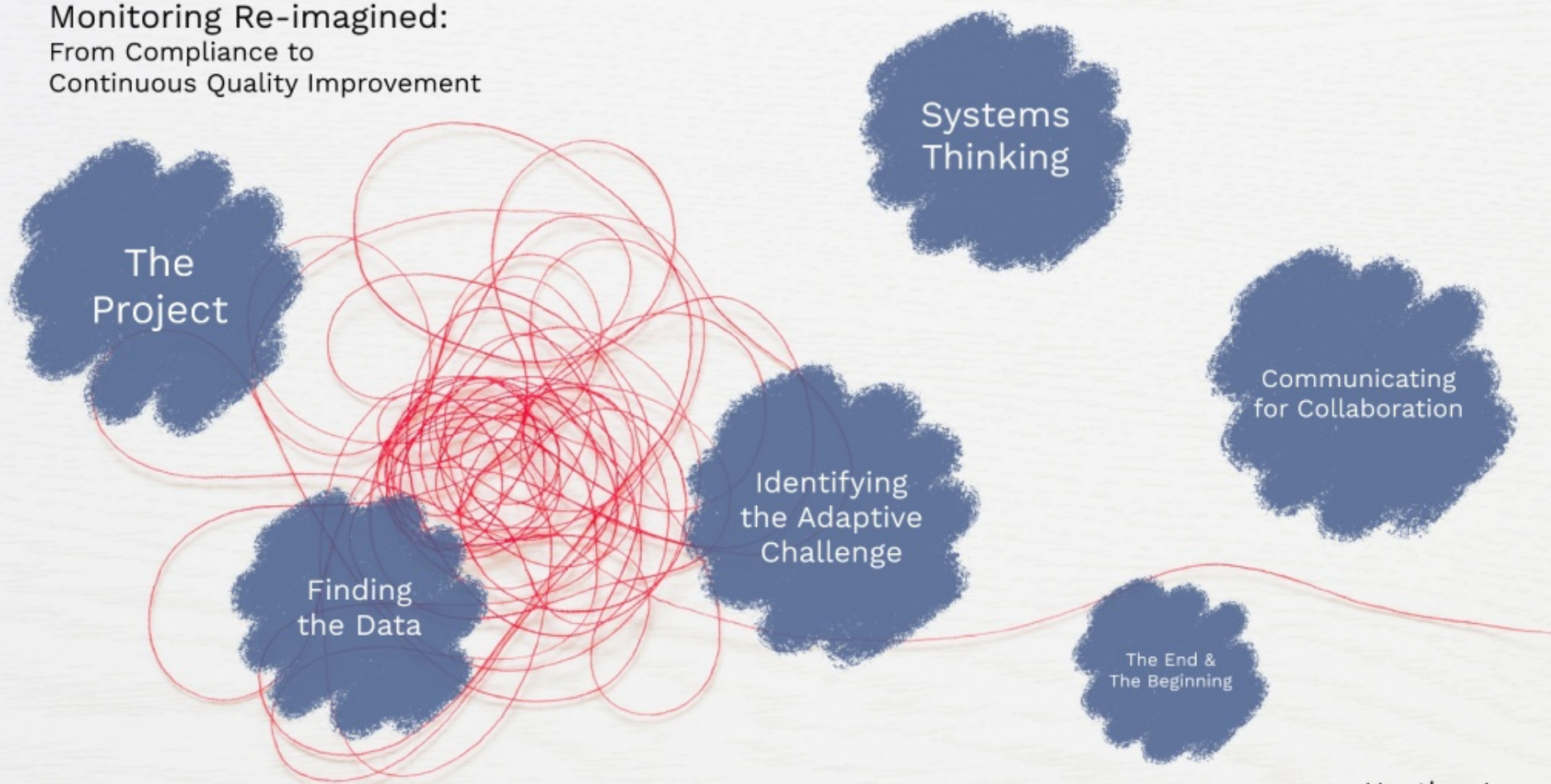


Monitoring Re-imagined:  
From Compliance to  
Continuous Quality Improvement



Heather Lucas  
Michigan Dept. of Education



# Redeveloping Grant Monitoring

Why?  
The New Plan

# Goals

1 Meet Grant Requirements

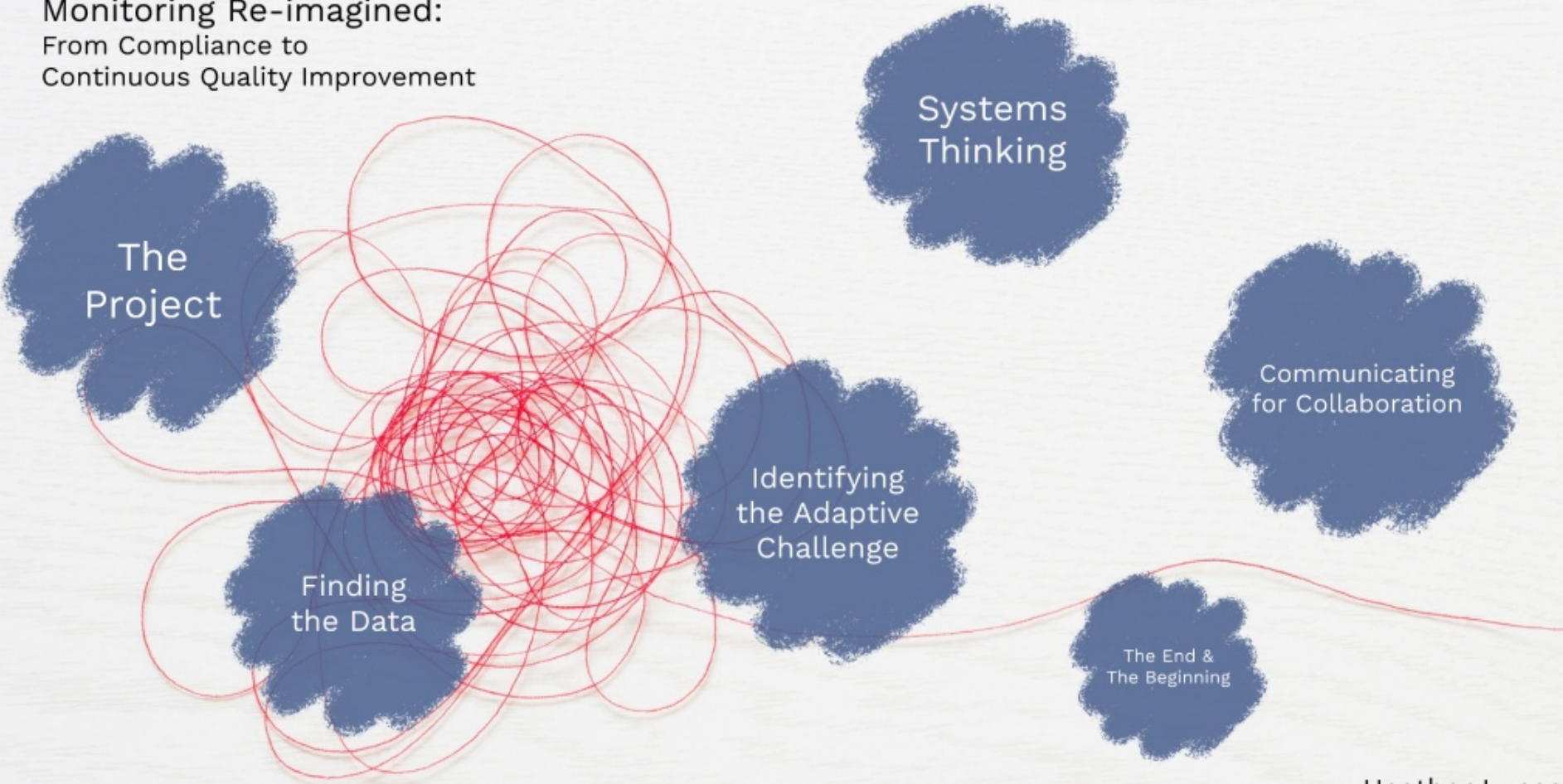
2 Weighted Risk Analysis

3 Increase Contacts

4 Increase Efficiency

5 Create Collaborative Culture

Monitoring Re-imagined:  
From Compliance to  
Continuous Quality Improvement

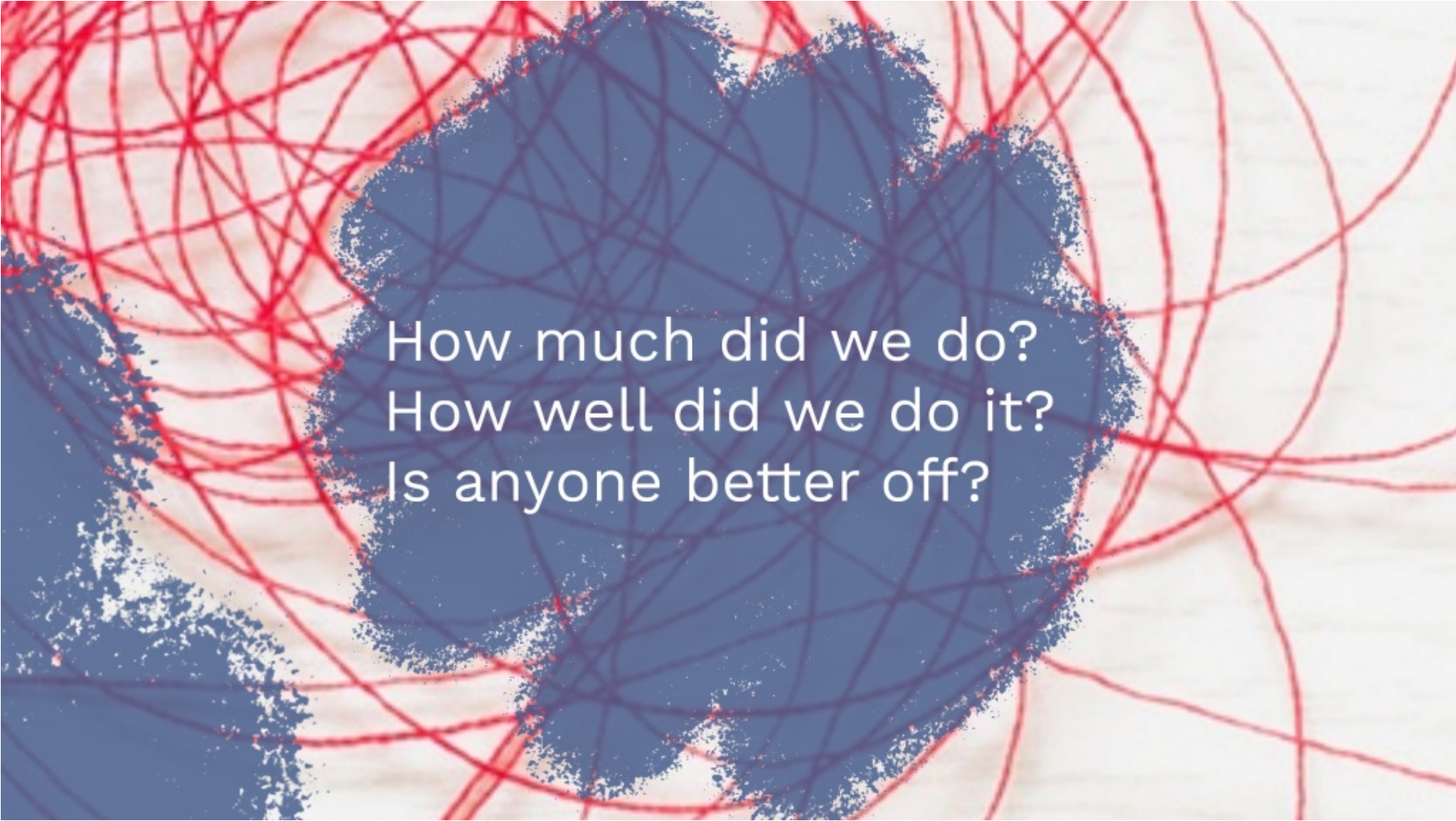


Heather Lucas  
Michigan Dept. of Education

## Results Driven...

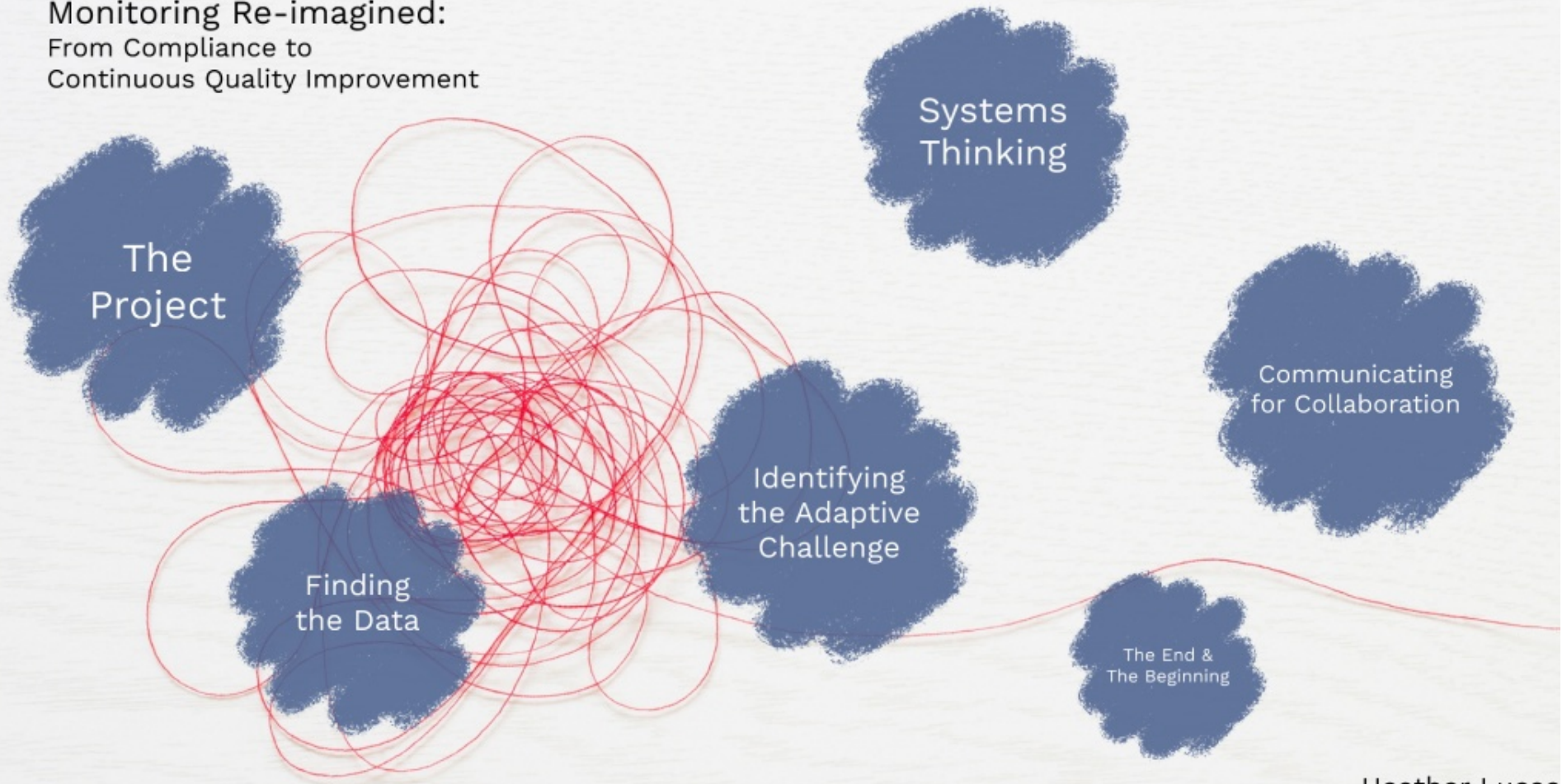
All children entering kindergarten in Michigan will be ready to learn.

## Data Points

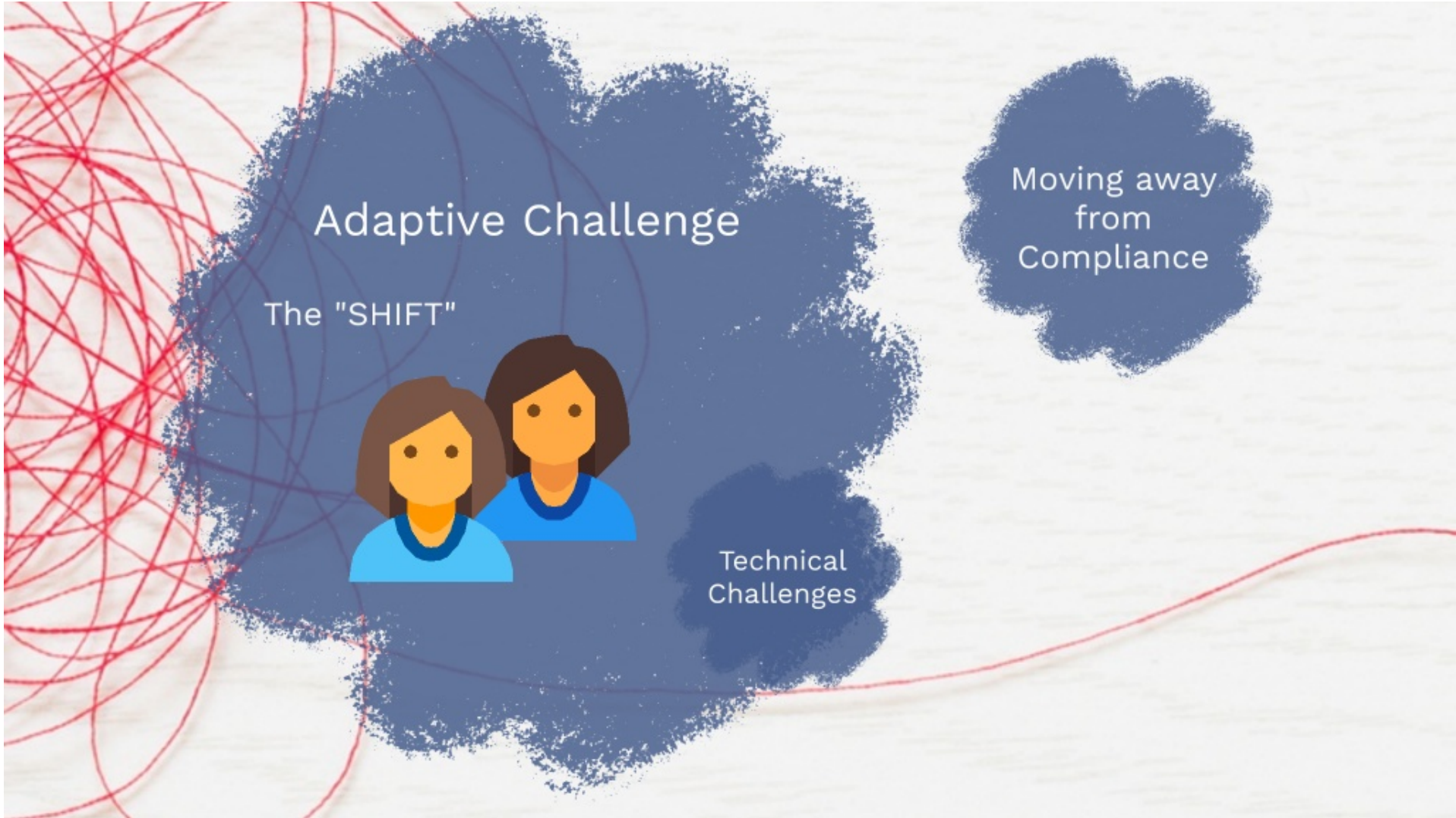
The background features a dense, chaotic pattern of red scribbles on a light-colored, textured surface. A large, irregular blue shape, resembling a brushstroke or a textured circle, is centered in the image. The text is overlaid on this blue shape.

How much did we do?  
How well did we do it?  
Is anyone better off?

Monitoring Re-imagined:  
From Compliance to  
Continuous Quality Improvement



Heather Lucas  
Michigan Dept. of Education

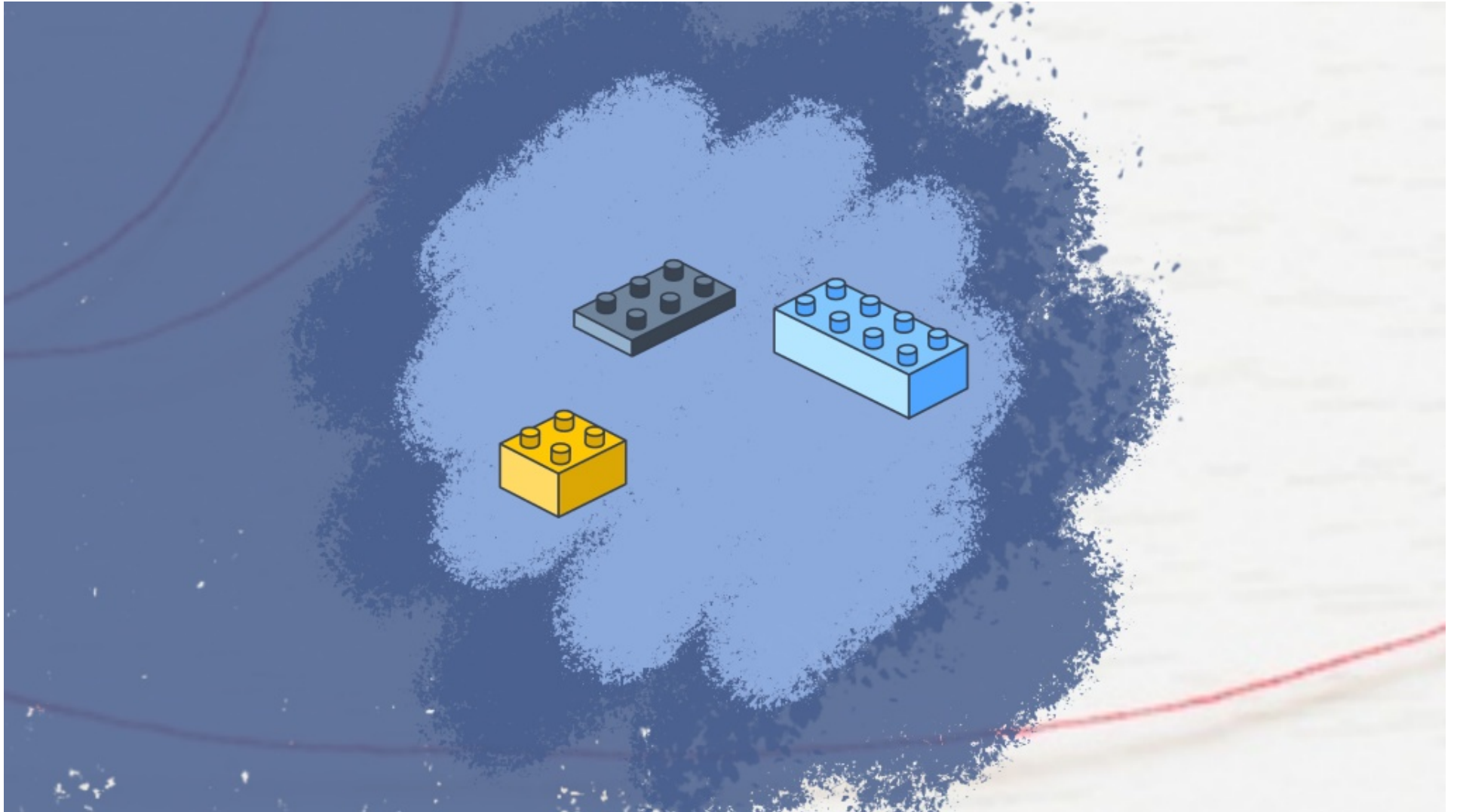


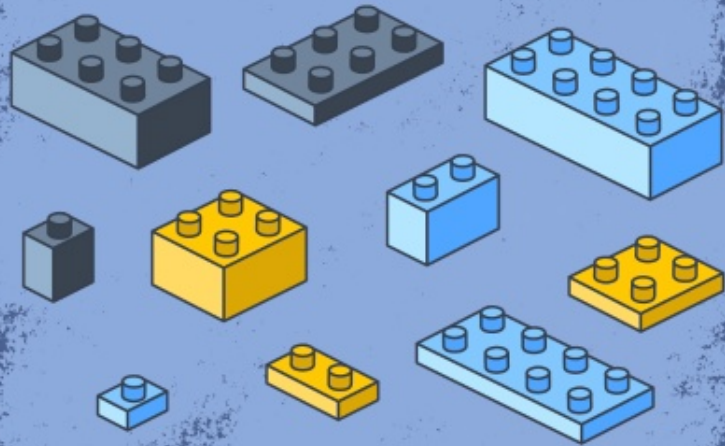




Putting quality at the center

Meeting requirements within context

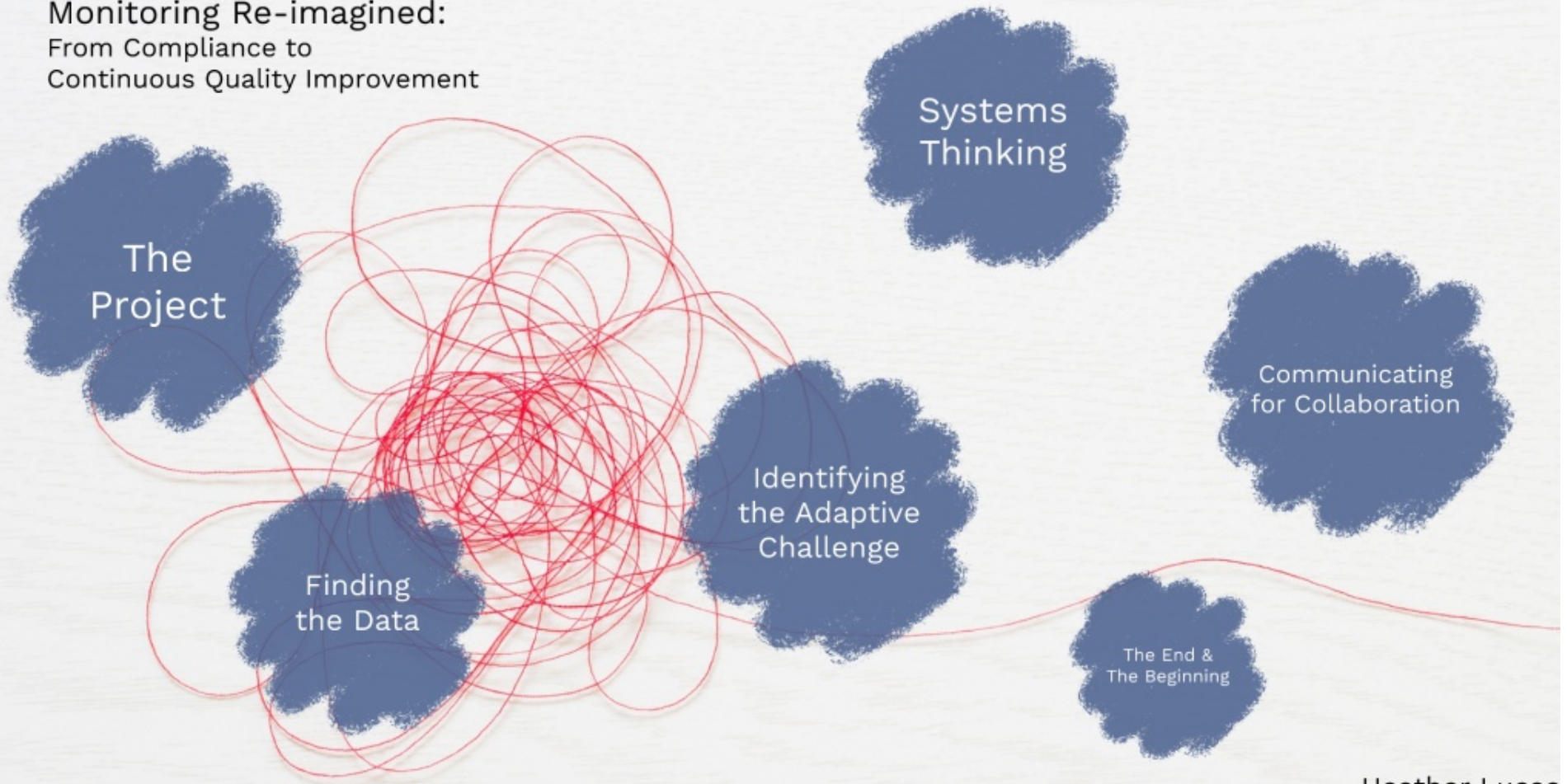





## Developing the tools

- Self Assessment Survey
- Desk Review
- On-Site Review

Monitoring Re-imagined:  
From Compliance to  
Continuous Quality Improvement

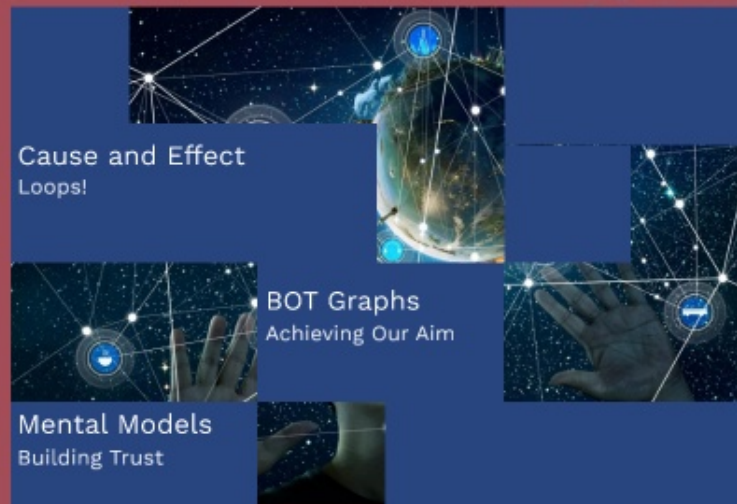


Heather Lucas  
Michigan Dept. of Education

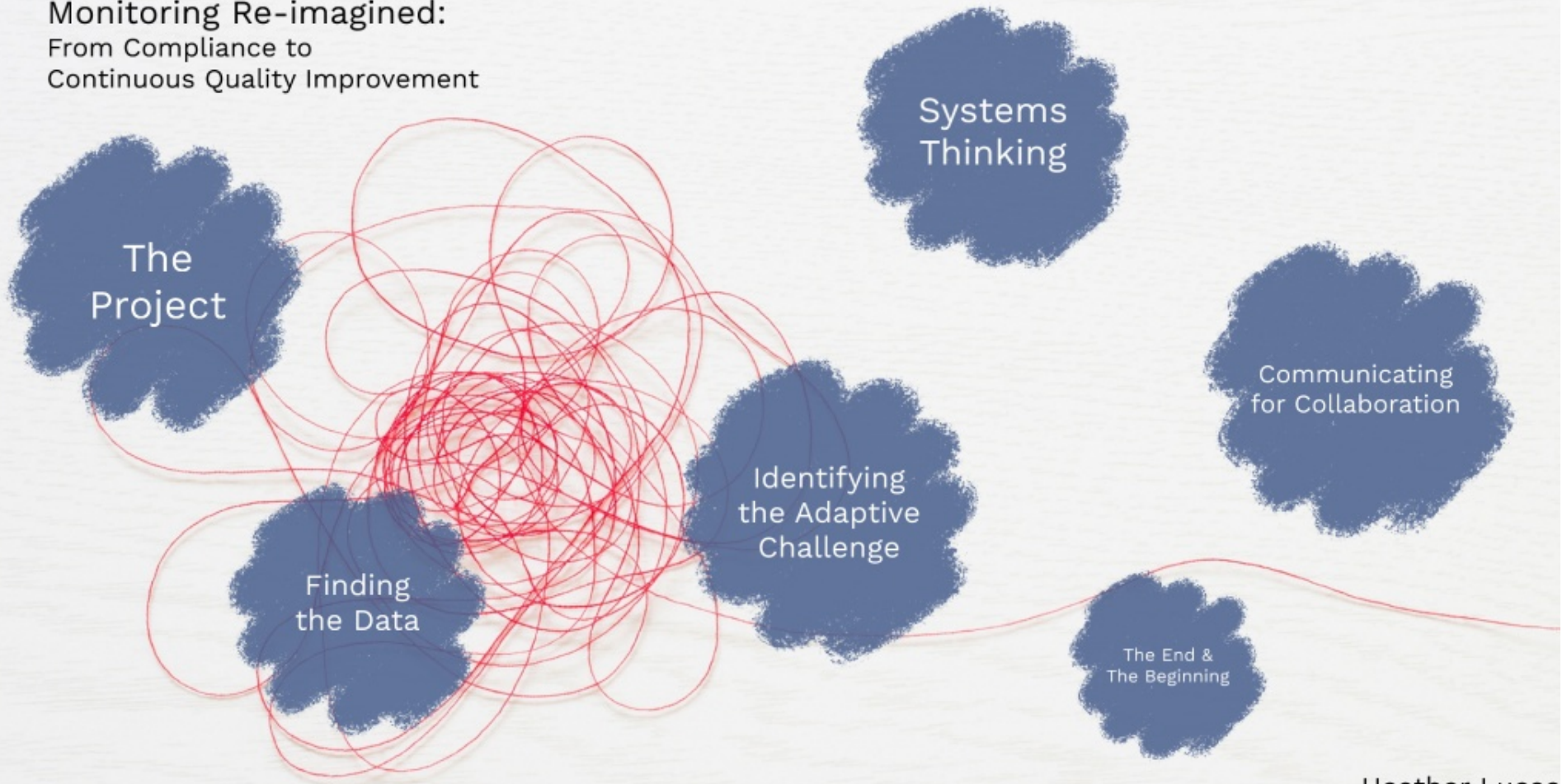


The Essence of it  
All!

# Habits of Systems Thinkers



Monitoring Re-imagined:  
From Compliance to  
Continuous Quality Improvement



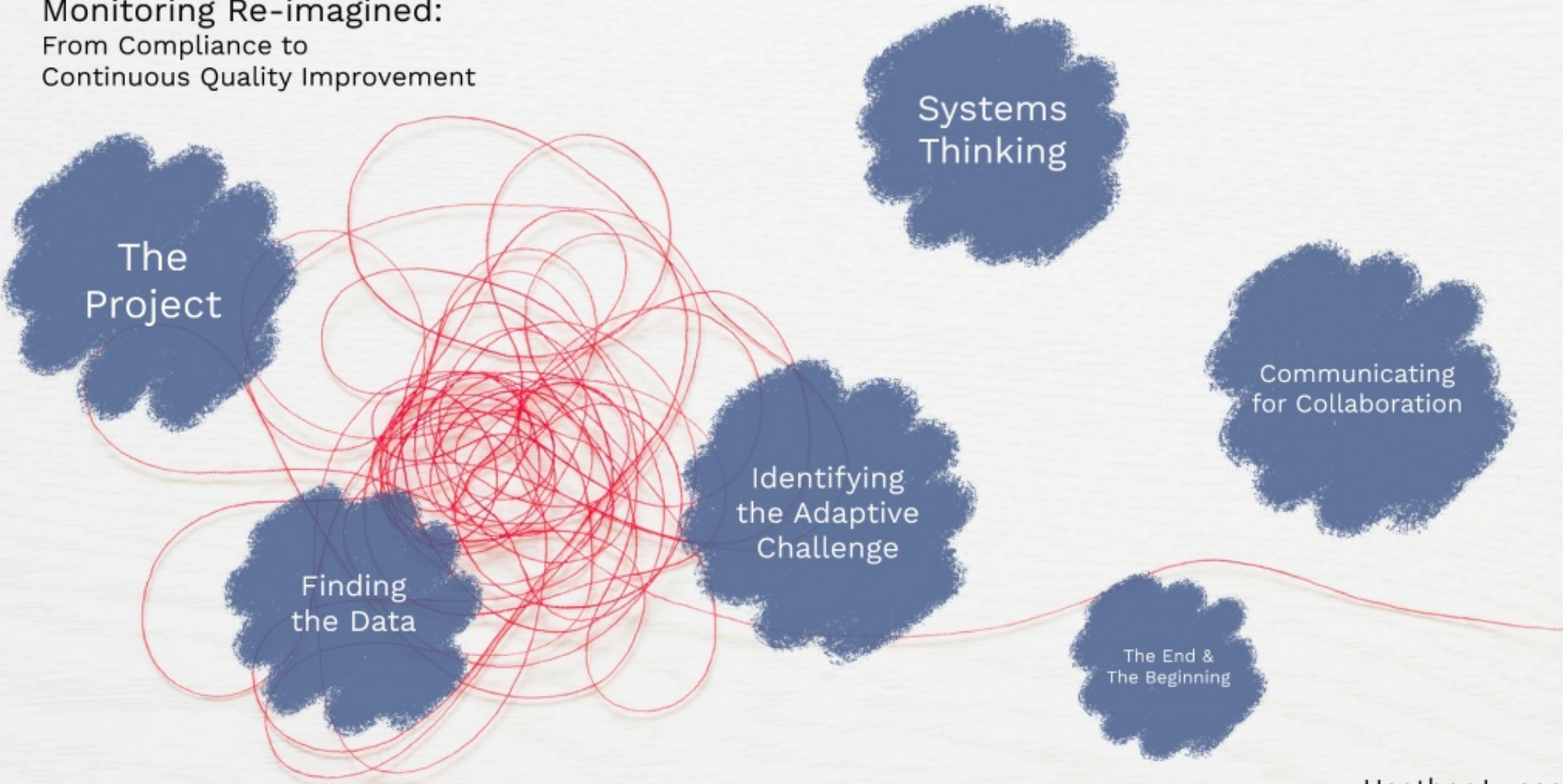
Heather Lucas  
Michigan Dept. of Education

## The Rollout Plan!





Monitoring Re-imagined:  
From Compliance to  
Continuous Quality Improvement



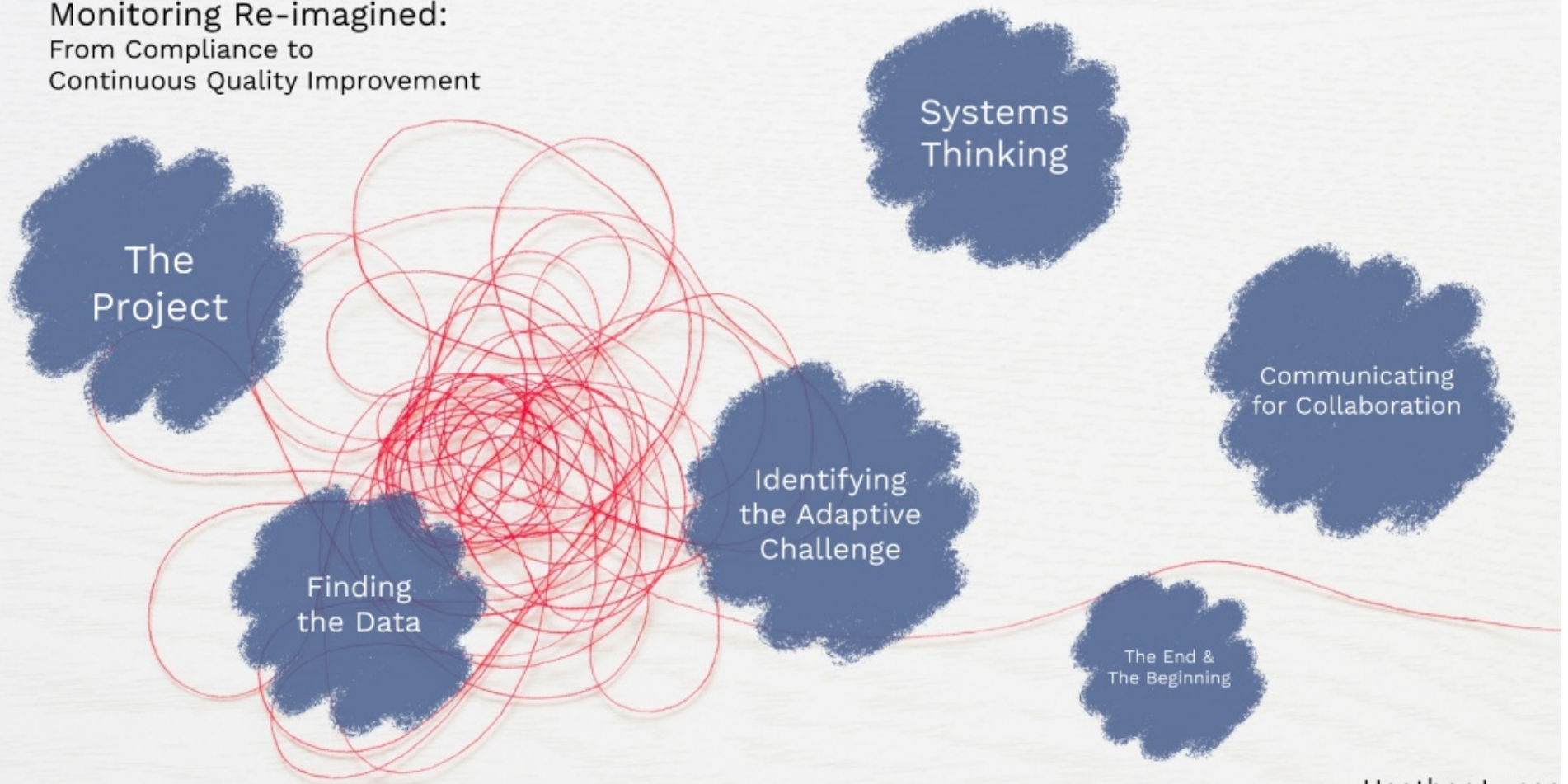
Heather Lucas  
Michigan Dept. of Education

A blue ink splatter is centered on a white background. A thin red line curves across the splatter, passing through the text. The splatter has a textured, grainy appearance.

## The Dash

Because it all comes back to  
the people...

Monitoring Re-imagined:  
From Compliance to  
Continuous Quality Improvement



Heather Lucas  
Michigan Dept. of Education

# THE DASH

*the poem by Linda Ellis*

I read of a man who stood to speak at the funeral of a friend. He referred to the dates on the tombstone from the beginning... to the end.

He noted that first came the date of birth and spoke of the following date with tears, but he said what mattered most of all was the dash between those years.

For that dash represents all the time they spent alive on earth and now only those who loved them know what that little line is worth. For it matters not, how much we own, the cars... the house... the cash. What matters is how we live and love and how we spend our dash.

So think about this long and hard; are there things you'd like to change? For you never know how much time is left that still can be rearranged.

To be less quick to anger and show appreciation more and love the people in our lives like we've never loved before.

If we treat each other with respect and more often wear a smile... remembering that this special dash might only last a little while. So when your eulogy is being read, with your life's actions to rehash, would you be proud of the things they say about how you lived your dash?