



**CEELO Cost of Quality Think Tank
May 16-17, 2018, Chicago, IL
Meeting Participant List**

**Samantha Aigner-Treworgy, Chicago Mayor's Office, Chief of Early Learning,
samantha.aigner-treworgy@cityofchicago.org**



Sam Aigner-Treworgy, Chief of Early Learning, Office of Mayor Rahm Emanuel, City of Chicago. Sam oversees the Mayor's vision for early education in the City of Chicago, connecting the work across City agencies to ensure a comprehensive approach to supporting families, birth to age 8. Sam holds a Bachelor's degree in early childhood education and sociology from Smith College and a Master's in both Social Work and Public Policy from the University of Chicago.

**Lisa Backer, Minnesota Department of Education, Early Childhood Supervisor,
lisa.backer@state.mn.us**

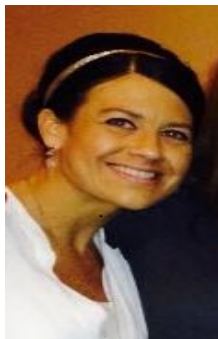


Lisa has been with the Minnesota Department of Education since 2000 and currently supervises MDE's Early Childhood Special Education team. She was an ECSE teacher and district administrator for 13 years before transitioning to MDE. Lisa has been with the Minnesota Department of Education since 2000 and has served as a specialist in Early Childhood Special Education and the supervisor of the ECSE team. In 2014 Lisa received the Distinguished Service Award from the Minnesota Administrators of Special Education (MASE).

Steve Barnett, National Institute for Early Education Research (NIEER), Director; Center on Enhancing Early Learning Outcomes (CEELO), Principal Investigator, sbarnett@nieer.org



Steve is a Board of Governors Professor and Director of the National Institute for Early Education Research (NIEER) at Rutgers University. His research includes studies of the economics of early care and education including costs and benefits, the long-term effects of preschool programs on children's learning and development, and the distribution of educational opportunities.



Kelli Bohanon, Washington State Department of Early Learning (DEL), ECEAP Administrator
kelli.bohanon@del.wa.gov

Kelli is the Administrator for DEL's Early Childhood Education and Assistance Program (ECEAP). Kelli's responsibilities include providing leadership, direction and administrative oversight to ECEAP, including planning and implementation of ECEAP's continued expansion efforts. Kelli earned a bachelor's degree in health education from Oklahoma State University and a master's in education administration from Central Washington University.

Lori Connors-Tadros, Senior Project Director, Rutgers/NIEER; CEELCO Co-Director,
ltadros@nieer.org



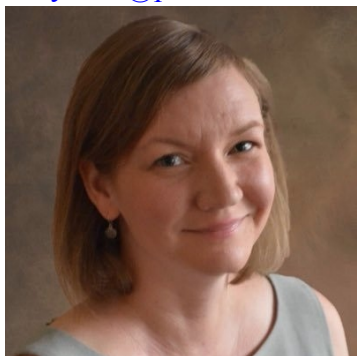
Lori leads the work of CEELCO to provide technical assistance to build capacity of state education agencies to improve outcomes for children birth through third grade. Lori conducts research and facilitates decision-making to ensure states develop evidence-based policy to support program quality, effective teaching, and developmentally appropriate learning. Lori collaborates with other technical assistance organizations to leverage expertise and resources in support of states' goals. Lori holds a Ph.D. in Developmental and Educational Psychology from Boston College and a Master of Science in Early Childhood Special Education from Southern Connecticut State University.

Megan Cox, SRI, Senior Education Researcher, megan.cox@sri.com



Megan is a technical assistance specialist for the Center for IDEA Early Childhood Data Systems (DaSy) and Regional Educational Laboratory–Appalachia (REL AP). Megan is leading a U.S. Department of Education-funded study to examine the feasibility of using pay for success to scale evidence-based preschool practices in Minnesota. Megan holds a Ph.D. in family studies with a focus on early childhood workforce from the University of Kentucky and an M.A. in sociology from Marshall University.

Cory Curl, Prichard Committee for Academic Excellence, Senior Fellow,
Cory.curl@prichardcommittee.org



Cory joined the staff in September 2015. Cory lead the Kentucky Cost of Preschool Study and Previously, she was Senior Fellow for Assessment and Accountability for Achieve, a national, non-partisan organization in Washington, DC, dedicated to improving educational outcomes. She has held positions for the U.S. Department of Education, the Tennessee Governor's Office of Planning and Policy and the Tennessee Department of Education. She completed undergraduate studies at Guilford College, holds an MPA from University of Kentucky's Martin School, and is currently completing her doctoral degree.

Ellen Frede, National Institute for Early Education Research (NIEER), Co-Director,
efrede@nieer.org



Ellen is Senior Co-Director at the National Institute for Early Education Research at Rutgers University and Research Professor at the Graduate School of Education. She conducts research on national and state early education policy and practices and provides technical assistance to state leaders. She is a co-developer of child and classroom assessment tools and complementary integrated curriculum and professional development systems. She holds a doctorate in developmental psychology, a master's degree in human development and a bachelor's degree in early childhood education.

Karin Garver, NIEER, Early Childhood Education Policy Specialist, kgarver@nieer.org



Karin recently joined NIEER after almost 16 years with the NJ Department of Education. During her time at the NJDOE, Karin served as Chief of Staff, Deputy Chief Academic Officer. She oversaw finance and data policy for New Jersey's state-funded preschool program, as well as the Race to the Top-Early Learning Challenge Grant. Karin has Masters of Arts in Public Policy from Rutgers University and Bachelor's degree in Sociology & Anthropology from Colgate University.

Rebecca Gomez, Heising-Simons, Program Officer, rgomez@hsfoundation.org



Rebecca is a program officer for the Education program at the Heising-Simons Foundation. Prior to joining the Foundation in 2016, Rebecca was an assistant research professor at Rutgers University's National Institute for Early Education Research, where she led the State of Preschool Yearbook data collection and analysis team, and provided technical assistance to states via the Center for Enhancing Early Learning Outcomes. She earned an Ed.D. in curriculum and teaching with a concentration in early childhood policy from Columbia University, a master's in early childhood policy from the University of New Hampshire.

Rolf Grafwallner, Chief Council of State School Officers/CEELO, Program Director/ Sr Scientist, Rolf.grafwallner@ccsso.org



Rolf is Program Director for Early Childhood Initiatives at the Council of Chief State School Officers (CCSSO) in Washington, D.C. where he works with states to improve learning opportunities and outcomes for young children. Prior to joining the Council, Rolf lead early childhood policy and school reform as an Assistant State Superintendent at the Maryland State Department of Education.

Theresa Hawley, Illinois Action for Children, Senior Vice President,
Theresa.hawley@actionforchildren.org



Theresa is responsible for ensuring that the Organization's policy and advocacy work, research efforts, and direct services to children and families are working together in an integrated way to strengthen early childhood systems at the community and state levels. Theresa has 25 years of experience in developing programs and systems that support the school readiness and social competence of young children in poverty. She recently served as the Executive Director of the Governor's Office of Early Childhood Development in Illinois. She received her Doctorate in Developmental Psychology from the University of Michigan.

Dana Hepper, Children's Institute of Oregon, Director of Policy & Program, dana@childinst.org



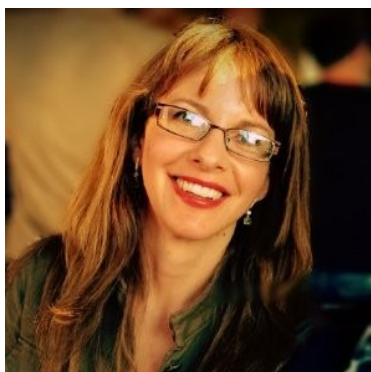
Dana oversees the organization's legislative advocacy and two early childhood demonstration sites. Dana joined Children's Institute in 2013 after nine years with Stand for Children, most recently as the national director of policy development. Dana started her career as an elementary school teacher and pre-K teacher. She graduated from Barnard College with a bachelor's in political science and a minor in elementary education.

Margaret Hulbert, United Way of Greater Cincinnati, Senior Vice President-Chief Public Policy Officer, Margaret.hulbert@uwgc.org



Margaret is vice president, strategic resources & public policy, United Way of Greater Cincinnati. She directs a team of public policy and development professionals who work with local, state and national government and private and community foundations to develop effective funding partnerships for health, human services and community development needs in Southwestern Ohio and Northern Kentucky. Margaret holds a bachelor's degree in English and political science from Macalester College, St. Paul, MN, and did postgraduate work in college administration at Indiana University.

Nina Johnson, Office of Child Care Quality Improvement Center, Senior Technical Assistance Specialist, Nina.johnson@icf.com



Nina has 20-plus years in early care and education include consultation, program administration, policy analysis, and research. Before joining the National Center on Early Childhood Quality Assurance, she oversaw the development, improvement, and implementation of policies and initiatives related to child care licensing in New Mexico.

Tracy Jost, Center on Enhancing Early Learning Outcomes (CEELO), Senior Policy Advisor
tracyjost@comcast.net



Tracy is a Senior Policy Advisor with CEELO. She is a former Education Program Specialist at Maryland State Department of Education. Tracy is the founder of Kid's Campus Early Learning Center since 2006. She was one of 8 National fellows to be selected for CEELO's 2015-2016 Leadership Academy. Tracy holds a Certificate of Advanced Study in Education Public Policy & Masters of Education from Towson University and Bachelor of Science in Paralegal Studies from the University of Maryland.

Lynn Karoly, RAND Corporation, Senior Economist, karoly@rand.org



Lynn is a senior economist at the RAND Corporation and a professor at the Pardee RAND Graduate School. Much of her recent child policy research has focused on early care and education (ECE) programs with studies of their use and quality, publicly subsidized programs such as Head Start, professional development for the ECE workforce, and quality rating and improvement systems. In other work, she has applied benefit-cost analysis and related tools to evaluate social programs including early childhood interventions and youth development programs. Lynn received her Ph.D. in economics from Yale University.

Garrison Kurtz, Dovetailing, President, garrison@dovetailing.us



Garrison is founder and President of Dovetailing, LLC, a consulting firm based in Seattle founded on the premise that successful solution and action are supported by connections among people, ideas and initiatives. Garrison has worked as an executive in the private, public and non-profit sectors and brings his varied experience and expertise across the fields of education, health, human services, and philanthropy to each project. He has worked and consulted for twenty-five years on numerous efforts to improve policy and practice, advocate for effective policy, promote strategic grant making and evaluate and accelerate success.

Katy McCullough, Early Childhood Technical Assistance Center (ECTA), Finance Team Lead, katy.mccullough@unc.edu



Katy is a Technical Assistance Specialist with the Early Childhood TA (ECTA) Center within the Trohanis Technical Assistance (TA) Projects. She provides technical assistance to Early Intervention/Part C and Preschool Special Education/619 Coordinators in states supporting system change in topics such as early intervention services, finance, and early childhood inclusion.

Sara Mickelson, Oregon Department of Education, Policy Advisor, sara.meckelson@state.or.us



Sara joined the Oregon Early Learning Division in 2018 as Policy Advisory. Her policy purview includes Oregon's early care and education workforce and the state professional development system, as well as preschool policy. This includes utilizing cost modeling to think differently about financing the state's preschool programs. Previously, she led early learning policy work at the Bainum Family Foundation, developed early learning policy at the National Governors Association, and managed Rhode Island's birth-to-five workforce systems work.

Anne Mitchell, Early Childhood Policy Research, President, anne.walsh.mitchell@gmail.com



Anne is President of Early Childhood Policy Research and co-founded the Alliance for Early Childhood Finance. Published widely, she has worked with more than half the states in the country as well as foundations, federal agencies and national organizations. A former child care center director, she is Past-President of the National Association for the Education of Young Children and served as a member of the Board of Education in Greenville, NY for 18 years. She is Co-Chair of the Quality Improvement Work Group of the NY Early Childhood Advisory Council.

Sandra Myers, Minnesota Department of Education, Early Learning Services Supervisor, sandra.myers@state.mn.us



Sandy oversees administration of the Early Learning Scholarships program and technical assistance for publically funded pre-kindergarten and Head Start Programs for Parent Aware, Minnesota's Quality Rating and Improvement System (QRIS). Sandy joined the Minnesota Department of Education in March of 2015, with over 25 years of experience in early childhood, including director of early childhood programming at Think Small, a local non-profit agency, which included overseeing the administration for the original pilot for early learning scholarships funded through the MN Early Learning Foundation and the state funded Pre-K Allowances, professional development, child care assistance, and program development and expansion with a focus on equity and access.

George Rickus, 3Si Third Sector Intelligence, Senior Consultant, grickus@team3si.com



George has expertise in business planning and analysis, and provides strategic framing and problem solving support to 3SI as a Senior Consultant. George is a former consultant at Bain & Company, where his work included client engagements in growth strategy, organizational design, and performance improvement. George holds a MBA from the University of Chicago Booth School of Business, and a BS in Chemical Engineering with Highest Honors from the University of Florida.

Kate Ritter, Illinois Action for Children, Cost Consultant, kmaharitter@gmail.com



Kate is an independent consultant specializing in early care and education finance and policy. She has worked with state and local governments, foundations, national policy organizations, early care and education providers, and child advocacy groups for over 15 years. Her most recent consulting work has been with the city of Chicago, Kansas City, and the Illinois Governor's Office of Early Childhood Development. Kate has an undergraduate degree in psychology from Middlebury College and a master's degree in public policy from the University of Chicago.

Jessica Roach, Children's Alliance, Early Learning Advocacy Manager, jessica@childrensalliance.com



Jessica works with the Early Learning team at the Children's Alliance and with the Early Learning Action Alliance to shrink the opportunity gap faced by low-income children and children of color by advocating for expanded access to high-quality early learning opportunities for all of Washington's children. She also facilitates the organization's advocacy for federal policies that expand early learning opportunities. Jessica formed a deep respect for the impact that high-quality early learning can have as the daughter of a Head Start teacher, and through her own years of teaching in a preschool classroom.

Michelle Ruess, NIEER, Assistant Director for Marketing & Communications, mruess@nieer.org



Michelle is a former newspaper reporter and editor who has spent the past several years helping a range of nonprofit groups share messages and engage audiences. She is now helping CEELo communicate with State Education Agencies to improve early learning opportunities and outcomes for all children. Her experience includes creating and implementing marketing plans in partnership with advancement and admissions directors at independent schools, supervising and implementing redesign of websites, writing articles for and editing newsletters and magazines, as well as freelance writing and fund-raising.

Carlena Sheeran, Cecilia Valley Elementary Schools, KY, Interim Principal, Carlena.sheeran@hardin.kyschools.us



Carlena is the Director of Early Childhood for Hardin County Schools, Elizabethtown, Kentucky. She is also serving as an interim principal for Cecilia Valley Elementary School. Carlena has 24 years of experience in education. Her experience includes that of a primary teacher, Literacy Resource Specialist, Curriculum, Instruction & Assessment Specialist, Title 1 Coordinator, and Assistant Principal. She is the current co-chairman of the Community Early Childhood Council of Hardin County and a member of the Strong Start Organization.

Linda Smith, Bipartisan Policy Center, Director, Early Childhood Policy,
lsmith@bipartisanpolicy.org



Linda is director of BPC's Early Childhood Development Initiative. She most recently served as the deputy assistant secretary for early childhood development in the Administration for Children and Families (ACF) at the U.S. Department of Health and Human Services. She also served as the department's liaison to the U.S. Department of Education and other federal agencies. Previously, Smith served as the executive director for the National Association of Child Care Resource and Referral Agencies (NACCRRRA) and she served as a legislative fellow and professional staffer on the Senate Health, Education, Labor and Pensions Committee under the chairmanship of the late Senator Edward M. Kennedy.

Helene Stebbins, Alliance for Early Success, Deputy Director, hstebbins@earlysucccess.org



Helene has been a part of the Alliance for Early Success since its inception, first as a grantee and now as deputy director. She is responsible for leading the health policy strategy, and also manages a portfolio of investments focused on financing, research, and communications. Helene began her career in early childhood policy working at the National Governors Association from 1996-2002. In 2003 Helene launched HMS Policy Research, an early childhood policy and research firm specializing in the coordination of the health, education, and care of children from birth through age five. Helene has extensive experience working with national organizations, foundations, state advocates, and state policymakers, including Governors, state legislators, and their policy advisors.

Bryan Stokes, Illinois Action for Children, Vice President for Early Learning Programs,
bryan.stokes@actforchildren.org



Bryan is the Vice President, Early Learning Programs at Illinois Action for Children. He is responsible for developing the agency's early learning programs and strengthening community systems in the Cook County suburbs. Bryan provides strategic leadership and support for quality improvement activities for early learning and child care programs. Mr. Stokes comes to Illinois Action for Children after serving as the Preschool Expansion Policy Director at the Illinois Governor's Office of Early Childhood Development.

Sara Vecchiotti, Foundation for Child Development, Chief Program Officer, sara@fcd-us.org



Sara is the Chief Program Officer at the Foundation and is responsible for program and grant development and monitoring and communications. Prior to this position, Sara served as the Chief Operating Officer for Lutheran Social Services of New York, and has also held several leadership positions at the New York City Administration for Children's Services within the Division of Early Care and Education. Sara completed the Society for Research in Child Development Congressional Fellowship and the Executive Branch Fellowship in the Office of Child Care at Administration for Children and Families.

Teresa Waite, Oregon Department of Education, Early Learning Program Advisor,

teresa.n.waite@state.or.us



Teresa has worked to support children and families in Oregon for over 20 years. As a program analyst working with Oregon Pre-Kindergarten (OPK) and Relief Nursery programs, she provides contractual, fiscal, and program support across the state. In addition, she is part the ELD Programs and Cross Systems Integration Team working to expand early learning options to meet the needs of Oregon's families.

Albert Wat, Alliance for Success, Senior Policy Director, awat@earlysucccess.org



Albert is a part of the Leadership Team, leading a portfolio of state and national Alliance partnerships and investments focused on pre-K and the education continuum birth through grade three. Albert was a Senior Policy Analyst in the Education Division of the National Governors Association Center for Best Practices, where he worked on early childhood education issues from birth through third grade. Before this Albert was the Research Manager at Pre-K Now. In 2014, Albert served on the committee of the Institute of Medicine's study on The Science of Children Birth to Age 8: Deepening and Broadening the Foundation for Success, which released the report, Transforming the Workforce for Children Birth Through Age 8: A Unifying Foundation.

GG Weisenfeld, NIEER, Assistant Research Director, gweisenfeld@nieer.org



GG is a senior TA specialist at CEELO and is on the Preschool Yearbook team at NIEER. Her research interests include early childhood system alignment and fiscal policies; leadership; and identifying and measuring quality indicators. She previously held the position of Hawaii's Director of the Executive Office on Early Learning in the Office of the Governor, worked on state level birth to grade three alignment as the P-3 Director of Early Learning for Hawaii P-20, was a professor at the City University of New York, and was an Early Head Start/Head Start Director and preschool teacher.

Simon Workman, Center for American Progress, Associate Director for Early Childhood Policy,
sworkman@americanprogress.org



Simon is the associate director of Early Childhood Policy at American Progress. His work focuses on elevating the need for high-quality, affordable early childhood programs and identifying policy solutions that improve program quality and increase access and public investment. Prior to joining American Progress, Simon led early childhood projects related to finance, evaluation, and policy analysis at APA Consulting in Denver, Colorado.



Amanda (Mandy) works as a program manager at Early Learning Indiana. She manages projects related to statewide data reporting, technology use, and center operations. As a member of the funding streams workgroup for Indiana's Early Learning Advisory Committee (ELAC), she previously led a pilot study using the Cost of Preschool Quality tool. Before joining Early Learning Indiana in 2015, Mandy worked for a youth development organization doing program evaluations and outcomes measurement. She earned her bachelor's degree in sociology from Ball State University and an M.A. in sociology from Indiana University at Indianapolis.

ABOUT CEELO

Our Mission: One of 22 Comprehensive Centers funded by the U.S. Department of Education's Office of Elementary and Secondary Education, the Center on Enhancing Early Learning Outcomes (CEELO) will strengthen the capacity of State Education Agencies (SEAs) to lead sustained improvements in early learning opportunities and outcomes. CEELO will work in partnership with SEAs, state and local early childhood leaders, and other federal and national technical assistance (TA) providers to promote innovation and accountability.

Goals: Based on the priorities established by the U.S. Department of Education, CEELO staff, partners, and experts will work with SEAs and other decision-makers to achieve the following goals:

- Improve states' knowledge about and use of early childhood comprehensive assessment systems
- Enhance the use of assessment data and other information to improve program quality
- Increase the knowledge and skills of the early learning workforce
- Strengthen the alignment of birth through 3rd grade educational policies and systems
- Increase the coordination of resources and policies across statewide systems