



# Data Governance Through Adaptive Leadership

CEELO Leadership Academy Cohort III

Kim Guieb

Hawai'i P-20 Partnerships for Education

August 2017

# Capturing the Momentum





# Goal: Results-Based Accountability

## ► Population Results Statement

All children in Hawai'i, birth to age eight, are ready to succeed in school, as measured by third grade reading and math proficiencies.

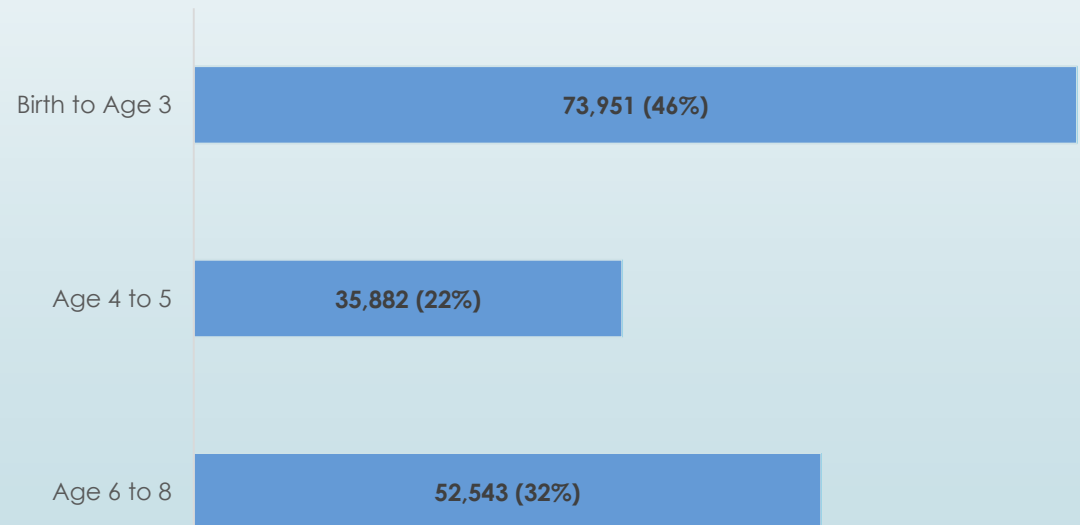
## ► Population Data

Hawai'i child population by age group: birth to age eight

Year: 2015

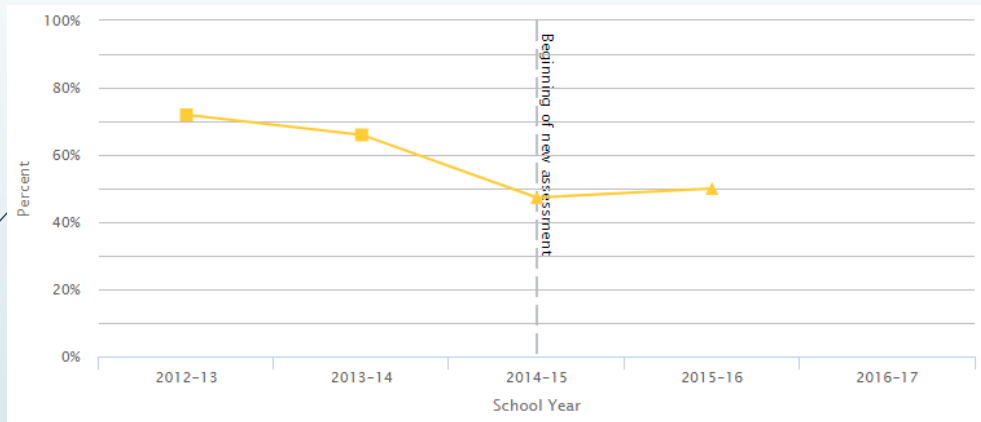
N = 162, 376

Data Source: KIDS COUNT Data Center,  
<http://datacenter.kidscount.org/>



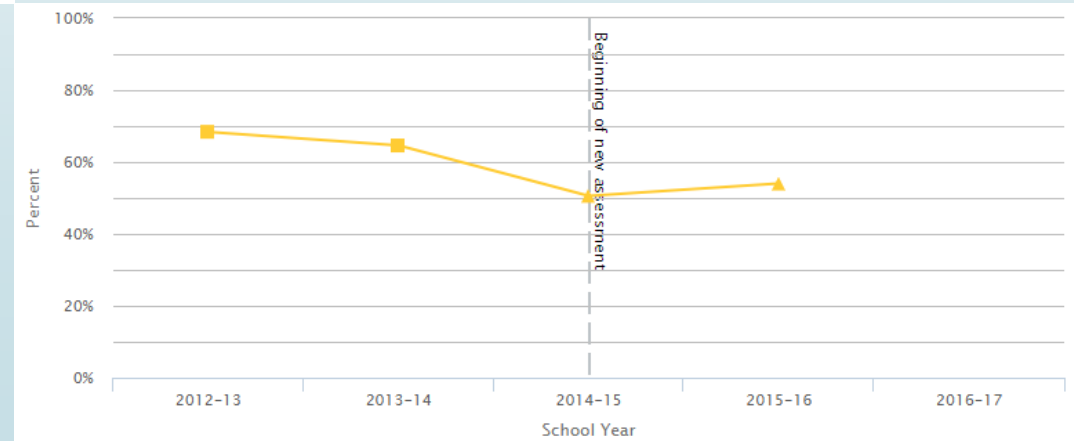
# Goal: Results-Based Accountability

## Population Results Indicators



Hawai'i's 3<sup>rd</sup> grade reading proficiency increased from 47.3% (SY 2014-2015) to 50% (SY 2015-2016). A new statewide assessment was adopted in SY 2014-2015.

Hawai'i's 3<sup>rd</sup> grade math proficiency increased from 50.6% (SY 2014-2015) to 54% (SY 2015-2016). A new statewide assessment was adopted in SY 2014-2015.



# Goal: Results-Based Accountability

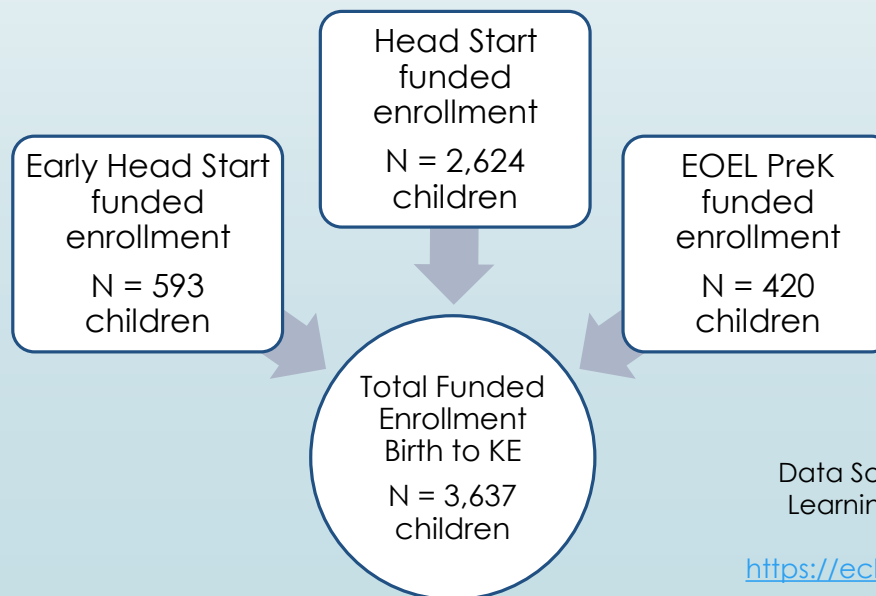
## ► Program Results Statement

The Executive Office on Early Learning (EOEL), the administrator of the State-funded PreK program, and the six Early Head Start and Head Start grantees have agreed to integrate their student-level data into the early childhood data system, when available, and connect with the P-20W state longitudinal data system in Hawai'i.

## ► Program Population Data

### 7 data systems:

- EOEL
- 6 Early Head Start/Head Start Grantees



Data Source: Head Start Early Childhood Learning & Knowledge Center, Program Service Reports,  
<https://eclkc.ohs.acf.hhs.gov/hslc/data/psr>

# Accountability

	QUANTITY	QUALITY
EFFORT	<u>How much did we do?</u>  # of data sharing agreements fully executed	<u>How well did we do it?</u>  % of data integration completed within 6 weeks of agreement being executed  # of critical questions answered
EFFECT	<u>Is anyone better off?</u>	
	# of children who exited Head Start and EOEL PreK programs demonstrated school readiness as indicated by TS GOLD PreK assessment	% of children who exited Head Start and EOEL PreK programs demonstrated school readiness as indicated by TS GOLD PreK assessment

# Obstacles and Challenges



- ▶ Leadership Turnovers
- ▶ Minimal executive leadership commitment
- ▶ Data integration not a program priority
- ▶ Timing
- ▶ Unfamiliarity with the language in the Memorandum of Understanding and data sharing agreement
- ▶ Legal counsel engagement



Technical Challenges

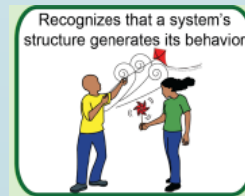
# Adaptive Leadership/Work

- Engage cross-agency, cross-sector stakeholders, both private and public, to answer specific policy and research questions related to early childhood
- Establish a centralized governing entity that guides early childhood data collection, sharing, analysis, and reporting
- Provide a valuable opportunity to disseminate robust information to policy makers and the public about the state-of-the-state in the early childhood sector
- Sustain the collaborative engagement

Copyright 2005 by Randy Glasbergen.  
www.glasbergen.com



**"It's not a great mission statement, but we'll revise it if things get better."**





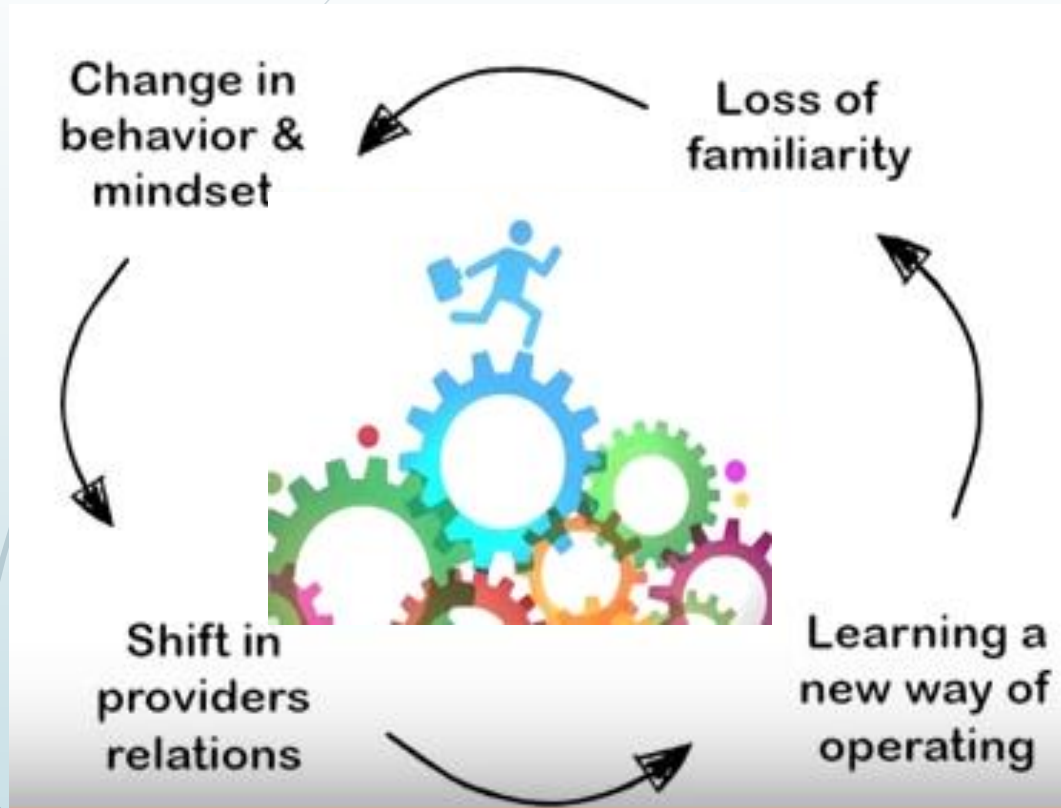
# Accomplishments

- ▶ 10 signed commitment from key stakeholders from public and private early childhood and advocacy programs
- ▶ Finalized ECDC Governance Handbook
- ▶ Embedded early childhood data governance project in Hawai'i P-20's strategic plan as the project management entity
- ▶ Included early childhood data governance project in the Executive Office on Early Learning's strategic plan
- ▶ Commitment from stakeholders for next 12 months



Version 1.0

# Lessons Learned

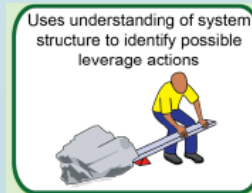
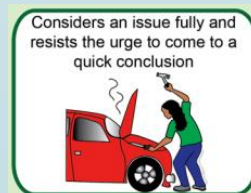
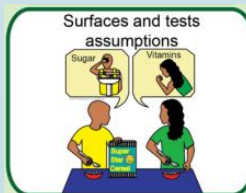


“Adaptive Leadership – Basic Introduction” by Eric Martin  
[https://www.youtube.com/watch?v=pRFXu\\_jBJec](https://www.youtube.com/watch?v=pRFXu_jBJec)

- Have a clear and consistent message about the data governance project as a foundation for an integrated data system.
- Ensure key members are at the meetings.
- Address clarifying questions at the following meeting.
- Be willing to take a risk and understand that there will be a “loss” of competence, familiarity and comfort.
- It’s easier to be a spectator on the balcony than coming down to the dance floor.
- Adaptive leadership takes time and solutions are not immediate.

# Plan and Next Steps

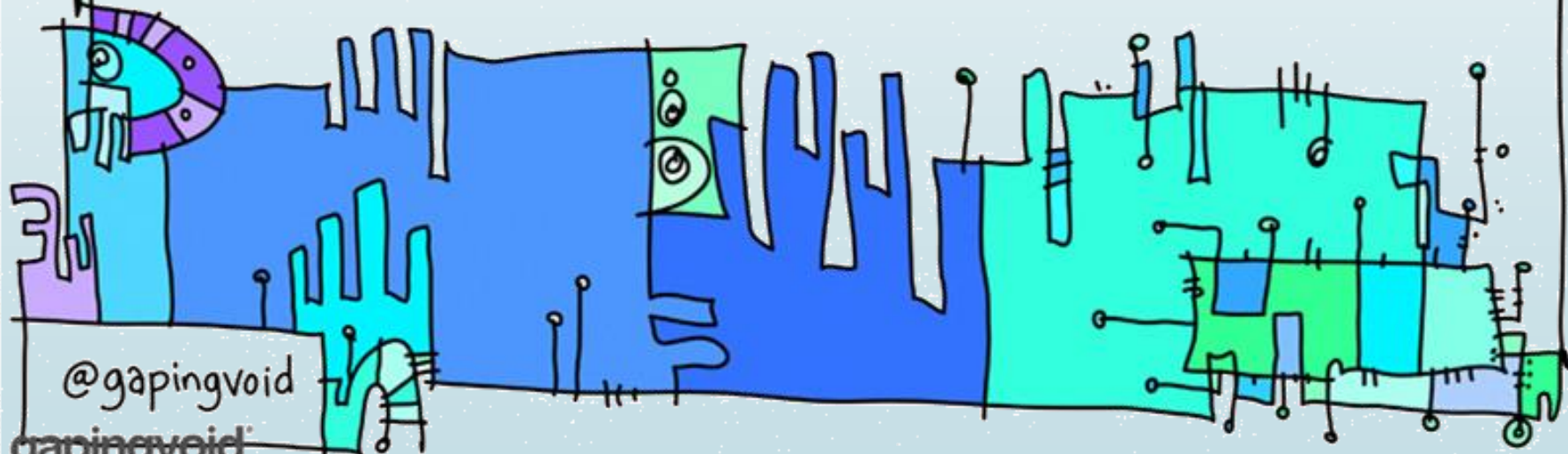
- Facilitate and oversee data governance collaborative meetings, activities, and deliverables
- Engage key members of the collaborative network to ensure active participation, decision-making and progress
- Work on strategic communication
- Continue to advocate for data integration with Head Start grantees
- Investigate funding options to support the collaborative efforts



THE BEST WAY TO SERVE, IS TO LEAD. ←

paradox.

THE BEST WAY TO LEAD, IS TO SERVE. ←





A close-up photograph of a sandy beach. In the upper portion, the ocean waves are breaking onto the shore, creating white foam. The sand is a light tan color. In the center of the frame, the words "I love you" are written in the sand in a cursive, hand-drawn style. The letters are slightly indented into the surface of the sand.

I love you