



# CEELO LEADERSHIP ACADEMY JOB EMBEDDED PROJECT

Jenny Metcalf

Early Childhood Consultant  
Illinois State Board of Education

# EARLY CHILDHOOD BLOCK GRANT COMPETITION

- ▶ Led the redesign of the state preschool grant competition, addressing new policy priorities
  - ▶ To ensure that children from high priority populations are enrolled in state preschool programs
  - ▶ To ensure that high need communities are given priority for early childhood funding



# RECALCULATING



“The key to success in life is how well you adapt to plan B.”



# ACCOMPLISHMENTS

- ▶ A review of state wide committee recommendations which led to revisions of the Preschool for All and Preschool Expansion grant applications
- ▶ Revised scoring rubric to be in alignment with new policy priorities
- ▶ Identified data elements to rank school districts by need to use in funding decisions
- ▶ Conducted “What If” meeting to plan for potential scenarios during funding process

# EVIDENCE OF ACCOMPLISHMENTS



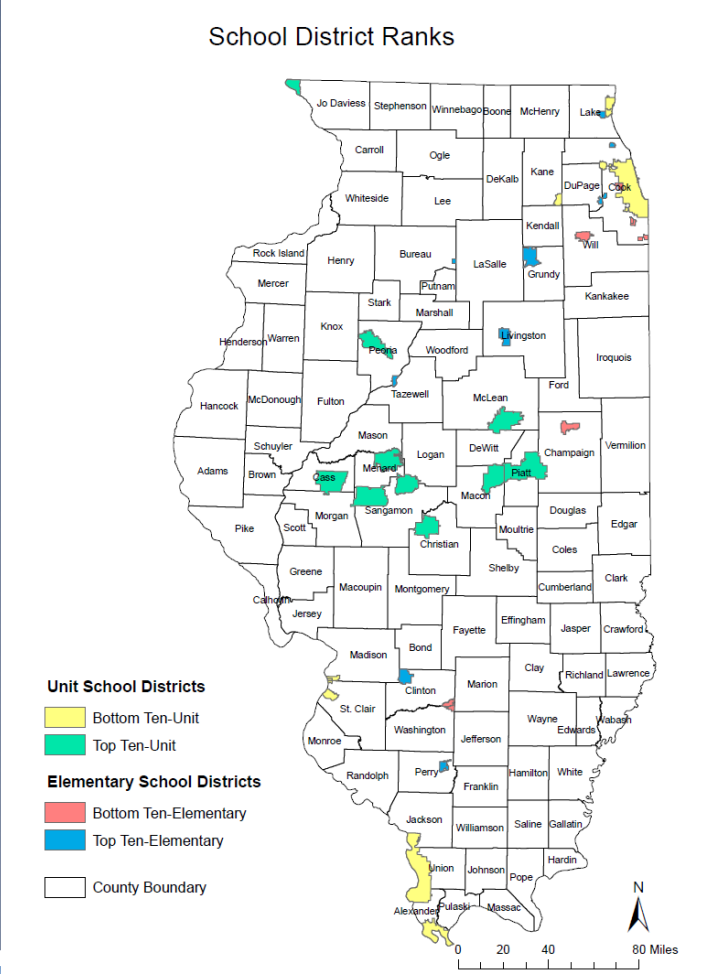
## **FY 2018 Preschool for All Expansion State RFP Released**

The [FY 2018 Preschool for All Expansion State RFP](#) has been released. The due date for submittal is 4 p.m. on Sept. 18. The application must be completed in eGMS. Eligible applicants must submit the [FY18 Notice of Intent to Submit Proposal - Preschool for All Expansion 3 to 5 Years](#) to access the RFP system in IWAS in order to apply. The intent to apply deadline is Sept. 8. The following entities outside the City of Chicago may apply: Regional Offices of Education, public school districts, university laboratory schools approved by the Illinois State Board of Education, charter schools, area vocational centers, and public or private not-for-profit entities with experience in providing education, health, social, and/or child development services to young children and their families. A separate appropriation has been awarded to City of Chicago District #299. Questions may be directed to the Early Childhood Division at 217/524-4835 or [earlychi@isbe.net](mailto:earlychi@isbe.net).

# UPDATED DATA

Yellow and pink indicate the highest areas of need in Illinois

First time to determine need by school district instead of by county

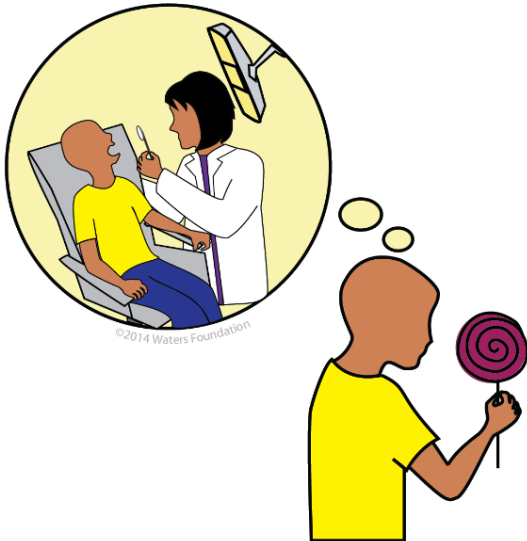




## LEADERSHIP SKILLS DEVELOPED

- ▶ Managing and adapting to change
- ▶ Recognizing value in the perspectives and contributions of internal and external stakeholders
- ▶ Understanding mental models (both mine and others)
- ▶ Planning ahead/backup plans
- ▶ Effective messaging to support values, tailored towards specific audiences
- ▶ Making better use of data to inform decisions

**Recognizes the impact of time delays when exploring cause and effect relationships**



©2014 Waters Foundation, Systems Thinking in Schools  
[www.watersfoundation.org](http://www.watersfoundation.org)

**Considers short-term, long-term and unintended consequences of actions**



©2014 Waters Foundation, Systems Thinking in Schools  
[www.watersfoundation.org](http://www.watersfoundation.org)



# AREAS FOR CONTINUED GROWTH

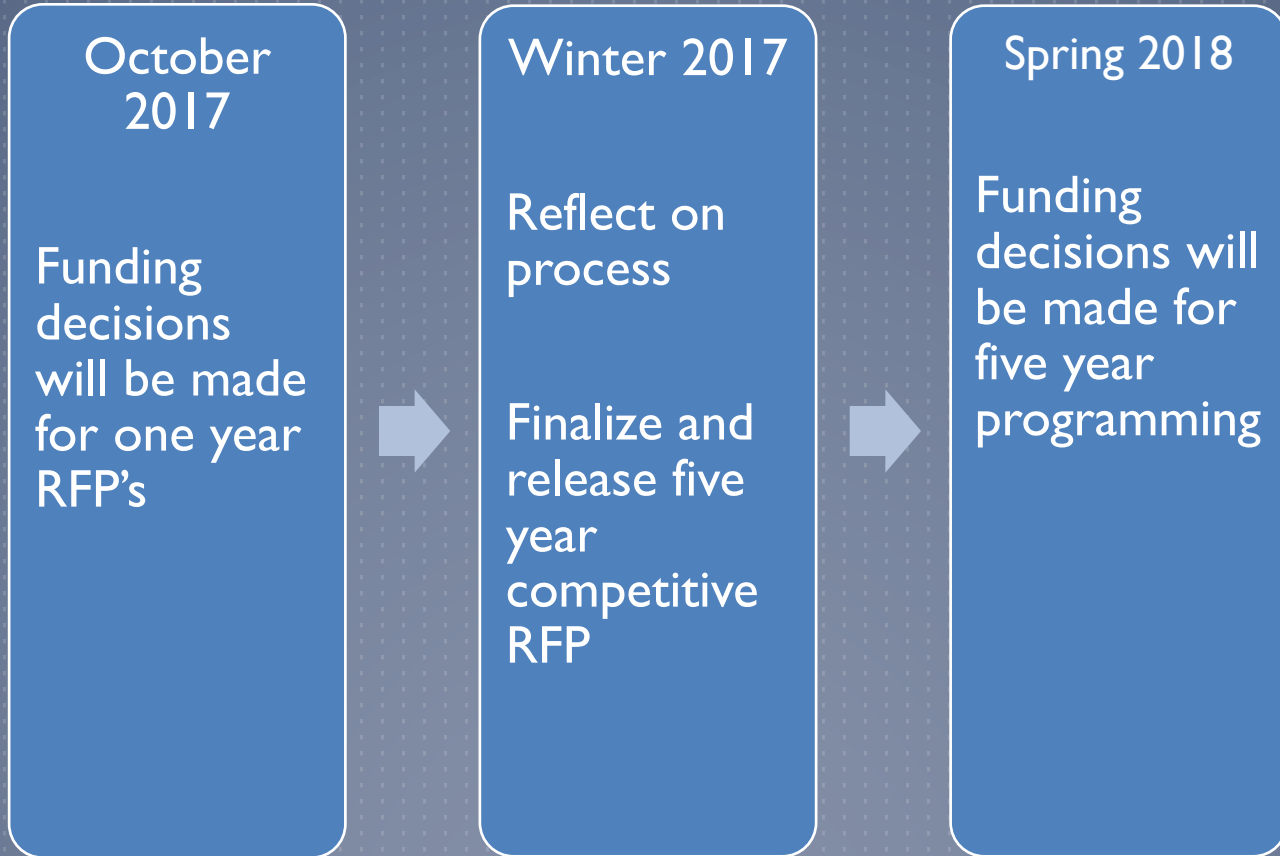
- ▶ Identifying and understanding change in the system over time
- ▶ Working collaboratively – gaining consensus among different perspectives
- ▶ Creating conditions to shift mental models



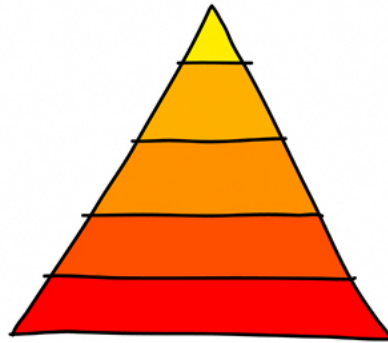
# AREAS FOR CONTINUED GROWTH



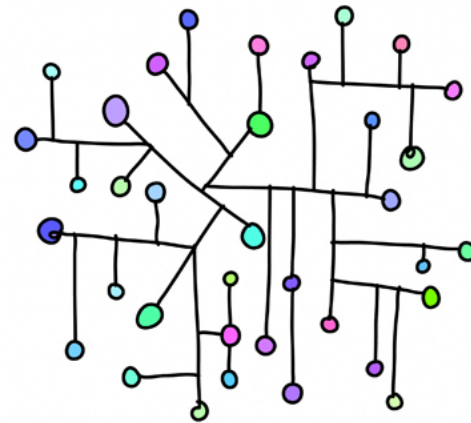
# WHAT'S NEXT....



# WHAT'S NEXT....



YOUR REALITY



THE REALITY

# NAVIGATING MY ROLE

**GREAT LEADERS DON'T  
SET OUT TO BE A  
LEADER...THEY SET OUT  
TO MAKE A DIFFERENCE.  
ITS NEVER ABOUT THE  
ROLE-ALWAYS ABOUT  
THE GOAL.**

[LisaHaisha.com](http://LisaHaisha.com)