

# WHY UNDERSTANDING THE COSTS OF PRESCHOOL QUALITY IS IMPORTANT

**JULY 19, 2016**



# Overview of the Agenda

- **See** a demonstration of the CPQ that is free to users.
- **Hear** from staff in Indiana that have used the tool to estimate costs of providing high quality preschool to 3 and 4 year olds in mixed delivery settings.
- **Discuss** with other colleagues implications for how states - calculate preschool program costs and allocations, monitor sub-grantee budgets for adequacy and equity, and plan for sustaining program once PDG funding ends.
- **Access TA and Resources**



# Presenters

- Lori Connors-Tadros,  
CEELO



- George Rickus,  
Third Sector Intelligence



- Amanda Zimmerman,  
Early Learning Indiana



# *What data is needed to use money wisely?*



# CPQ Can Provide Data on...

- How much would it cost to serve more children with current quality standards?
- How much would it cost to raise standards in an existing program?
- What is an adequate per child/program allocation based on total available funding?
- What are the costs of various state specific policy proposals, e.g. increase compensation?
- How much funding is needed at different points in time (e.g. when federal/private grant funds end)?

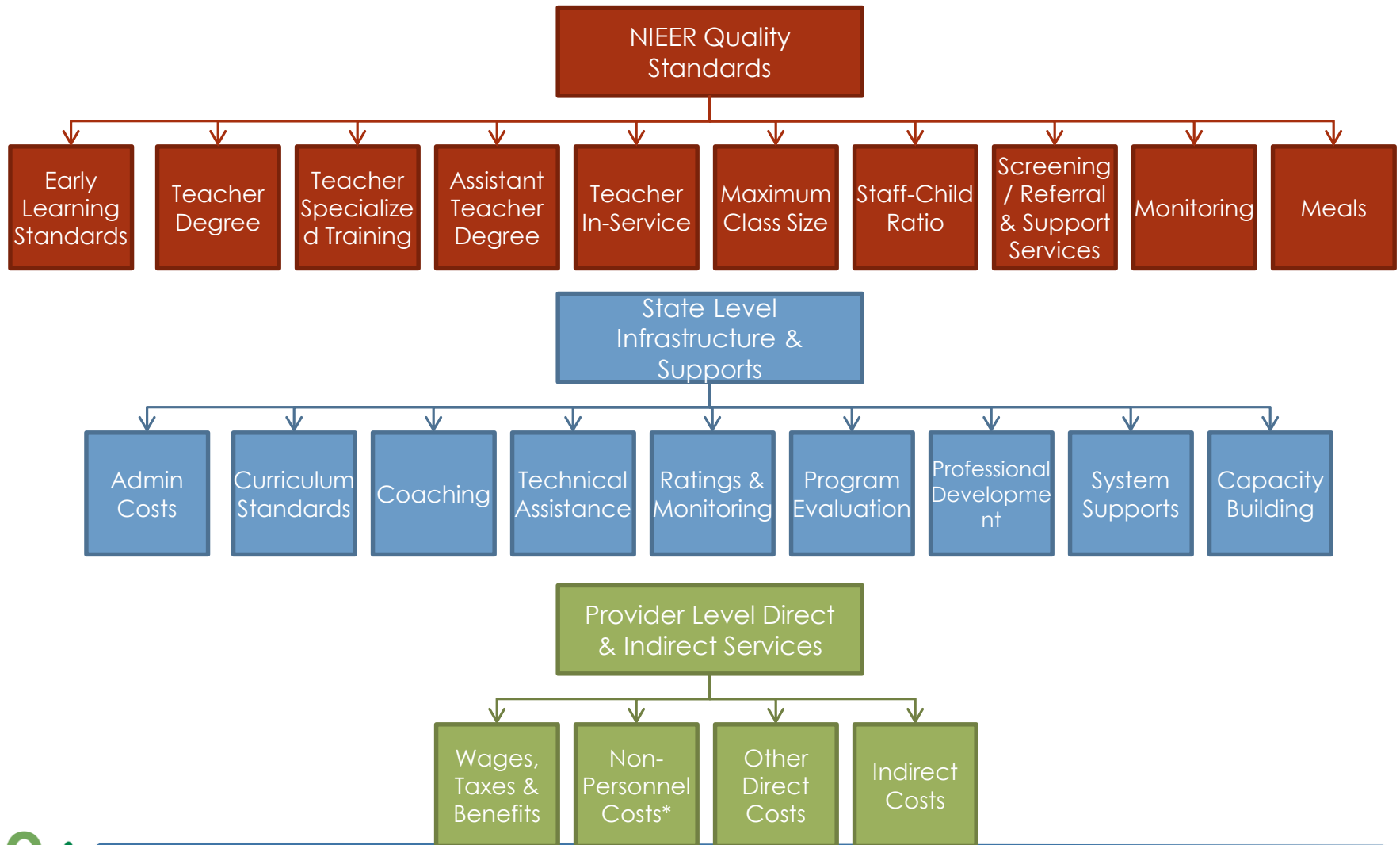


# CPQ: Basic Characteristics

- Excel based model, no macros, transparent
- Includes settings for “best practice” based on the 10 NIEER quality benchmark
- Flexible - allows understanding implications for cost of various alternate modes of delivery, combination of ingredients, or prices
- Multi-year projections



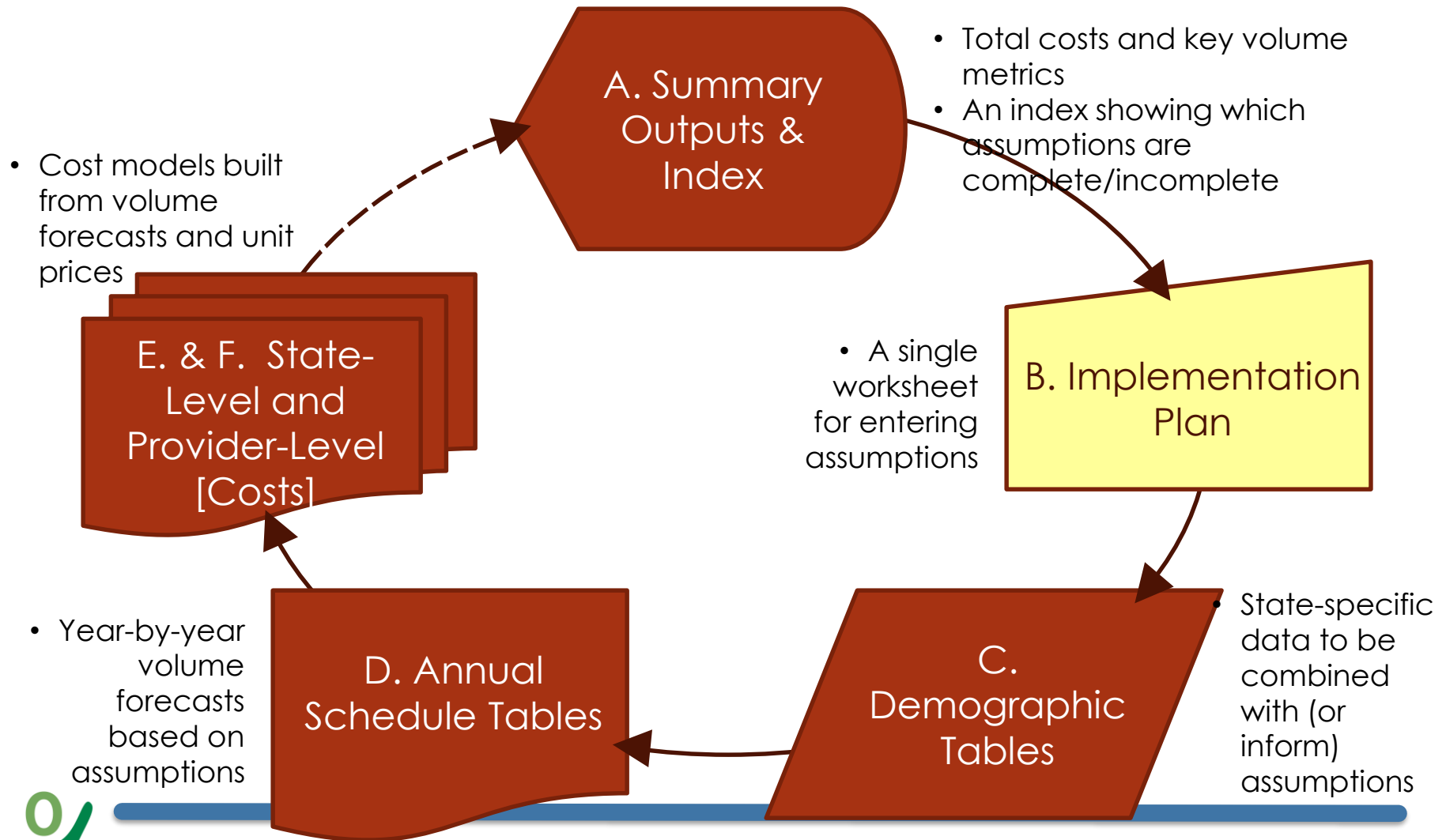
# CPQ Tool Components



\*Non-Personnel Costs include per-child costs (e.g., food and food prep), per-classroom costs (e.g., rent and utilities allocations), per-staff costs (e.g., consultants and training incremental to NIEER Quality Standards assumptions), and per-site costs (e.g., audit and legal expense).



# Flow Chart of the CPQ Tool





# Examples of CPQ Tool Capabilities

*The Tool can be used to evaluate multiple aspects of high-quality preschool, individually or in tandem*

- Preschool slot plans by dosage
  - Vary by facility type by year
- Teacher qualifications & tuition support programs
  - Estimate teacher counts over time by degree level, net of attrition, and accounting for professional development
- State-level administrative costs
  - Explicitly assume incremental administrative costs for state-level monitoring and oversight quality elements
- Regional variations
  - Use the scenario planning feature to compare alternative models, or to model individual regions

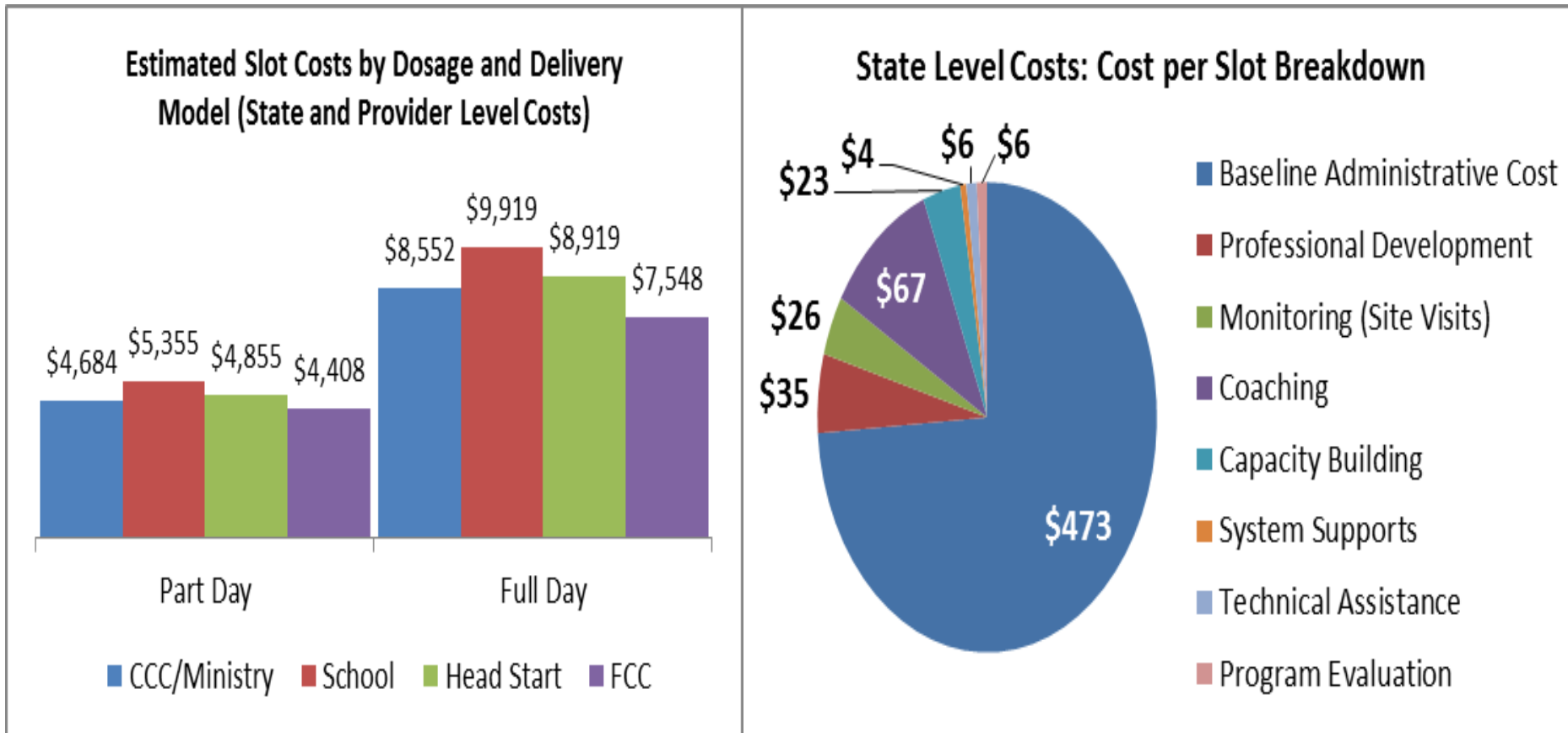
Yr1	Yr2	Yr3	Yr4	Yr5



IN team has used CEELO's Cost of Preschool Quality (CPQ) model to determine costs of expanding access to high quality preschool, in diverse settings.



# 1<sup>st</sup> Draft ~ Estimated Costs of Publicly Funded Preschool in IN



Let's look at the Tool itself!



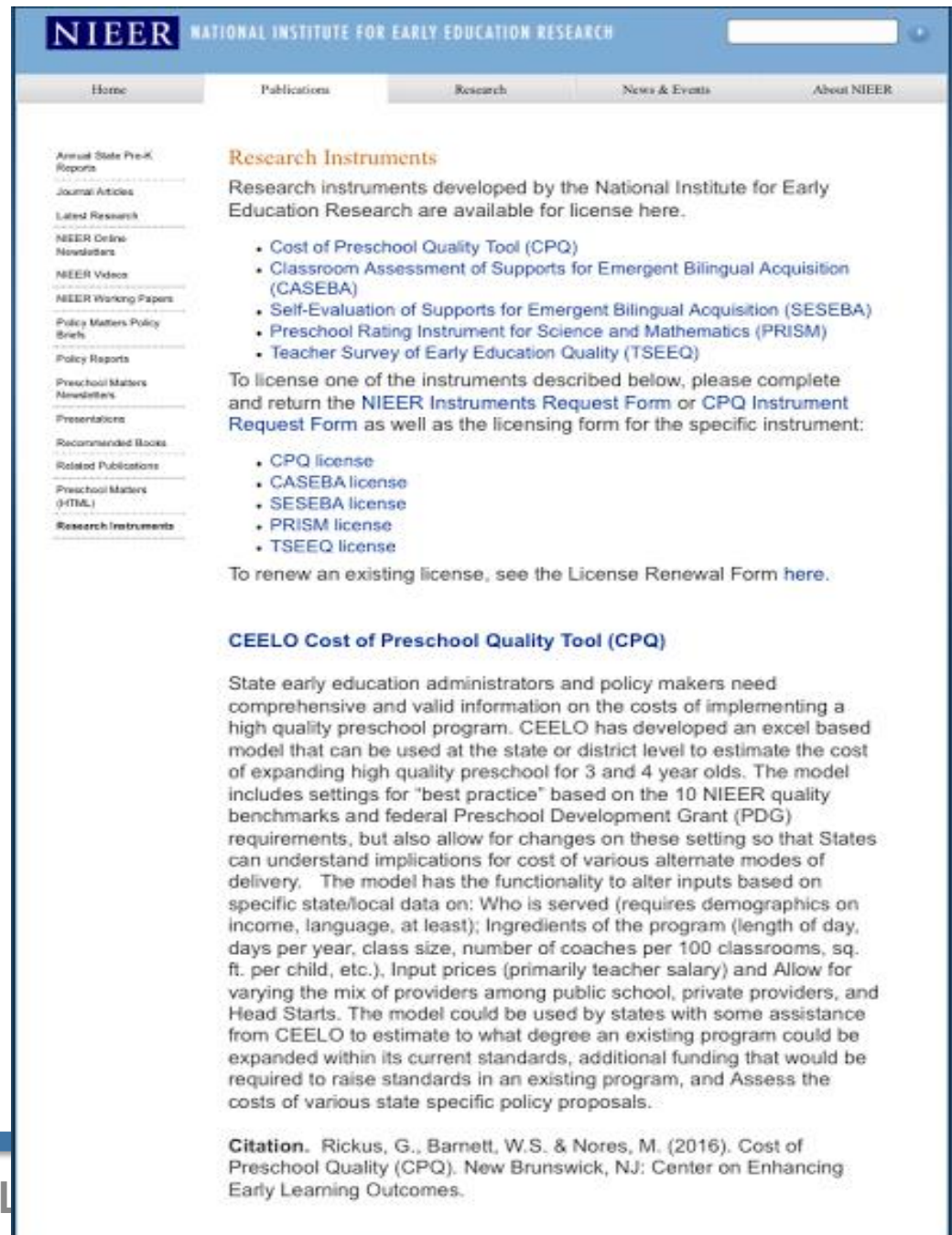
# QUESTIONS & DISCUSSION

- We encourage you to ask questions
  - Submit through the chat box or on the phone (phones are unmuted)
- Share your experiences getting/using cost data



# Access to the Tool

- NIEER's website
- With a license
- Free of cost
- <http://nieer.org/publications/research-instruments>



The screenshot shows the NIEER website with a navigation bar at the top containing 'Home', 'Publications', 'Research', 'News & Events', and 'About NIEER'. A search bar is located in the top right corner. On the left side, there is a vertical menu with links to 'Annual State Pre-K Reports', 'Journal Articles', 'Latest Research', 'NIEER Online Newsletters', 'NIEER Videos', 'NIEER Working Papers', 'Policy Matters Policy Briefs', 'Policy Reports', 'Preschool Matters Newsletters', 'Presentations', 'Recommended Books', 'Related Publications', 'Preschool Matters (ITIL)', and 'Research Instruments'. The main content area is titled 'Research Instruments' and contains the following text:

Research instruments developed by the National Institute for Early Education Research are available for license here.

- Cost of Preschool Quality Tool (CPQ)
- Classroom Assessment of Supports for Emergent Bilingual Acquisition (CASEBA)
- Self-Evaluation of Supports for Emergent Bilingual Acquisition (SESEBA)
- Preschool Rating Instrument for Science and Mathematics (PRISM)
- Teacher Survey of Early Education Quality (TSEEQ)

To license one of the instruments described below, please complete and return the NIEER Instruments Request Form or CPQ Instrument Request Form as well as the licensing form for the specific instrument:

- CPQ license
- CASEBA license
- SESEBA license
- PRISM license
- TSEEQ license

To renew an existing license, see the License Renewal Form [here](#).

### CEELO Cost of Preschool Quality Tool (CPQ)

State early education administrators and policy makers need comprehensive and valid information on the costs of implementing a high quality preschool program. CEELO has developed an excel based model that can be used at the state or district level to estimate the cost of expanding high quality preschool for 3 and 4 year olds. The model includes settings for "best practice" based on the 10 NIEER quality benchmarks and federal Preschool Development Grant (PDG) requirements, but also allow for changes on these setting so that States can understand implications for cost of various alternate modes of delivery. The model has the functionality to alter inputs based on specific state/local data on: Who is served (requires demographics on income, language, at least); Ingredients of the program (length of day, days per year, class size, number of coaches per 100 classrooms, sq. ft. per child, etc.), Input prices (primarily teacher salary) and Allow for varying the mix of providers among public school, private providers, and Head Starts. The model could be used by states with some assistance from CEELO to estimate to what degree an existing program could be expanded within its current standards, additional funding that would be required to raise standards in an existing program, and Assess the costs of various state specific policy proposals.

**Citation.** Rickus, G., Barnett, W.S. & Nores, M. (2016). Cost of Preschool Quality (CPQ). New Brunswick, NJ: Center on Enhancing Early Learning Outcomes.



# Additional Resources

- All materials are posted on [ceelo.org](http://ceelo.org) [Costs of Quality Preschool Webinar](#)
- Forthcoming, User Guide
- On-line modules
- CEELO TA to use tool independently
- See these finance related resources:
  - [Resources developed for grantees on financing](#)
  - [Discussion Guide: State Financing for ECE systems](#)
  - [Financing Early Care and Education bibliography](#)



# CEELO

Center on Enhancing  
Early Learning Outcomes



**THANK YOU**

***We want your feedback~ Please  
complete the evaluation!***

