



# MOBILIZING AN EXCEPTIONAL EARLY CHILDHOOD WORKFORCE

2016 ROUNDTABLE  
BALTIMORE, MARYLAND  
JUNE 2, 2016

STEVEN HICKS, SENIOR POLICY ADVISOR  
OFFICE OF EARLY LEARNING  
US DEPARTMENT OF EDUCATION  
[STEVEN.HICKS@ED.GOV](mailto:STEVEN.HICKS@ED.GOV)



**MOBILIZING AN  
EXCEPTIONAL  
EARLY  
CHILDHOOD  
WORKFORCE**



# MOBILIZING AN EXCEPTIONAL EARLY CHILDHOOD WORKFORCE

Mobilize: verb (used with object), mobilized, mobilizing.

1. to assemble or marshal (armed forces, military reserves, or civilian persons of military age) into readiness for active service.
2. to organize or adapt (industries, transportation facilities, etc.) for service to the government in time of war.
3. to marshal, bring together, prepare (power, force, wealth, etc.) for action, especially of a vigorous nature: to mobilize one's energy.
4. to increase or bring to a full stage of development: to mobilize one's anger.





# MOBILIZING AN EXCEPTIONAL EARLY CHILDHOOD WORKFORCE

- Exceptional:

1. forming an exception or rare instance; unusual; extraordinary:

*The warm weather was exceptional for January.*

2. unusually excellent; superior:

*an exceptional violinist.*





Lilly Guzman shared **Sonic Drive-In's photo.**

5 hrs · 👤

Natalie Eckhart and Steven Hicks

#ThanksTeach for letting me call you 'Mommy Hen' and to the other teach for forcing me to put a silkworm on my nose 😂😂😂



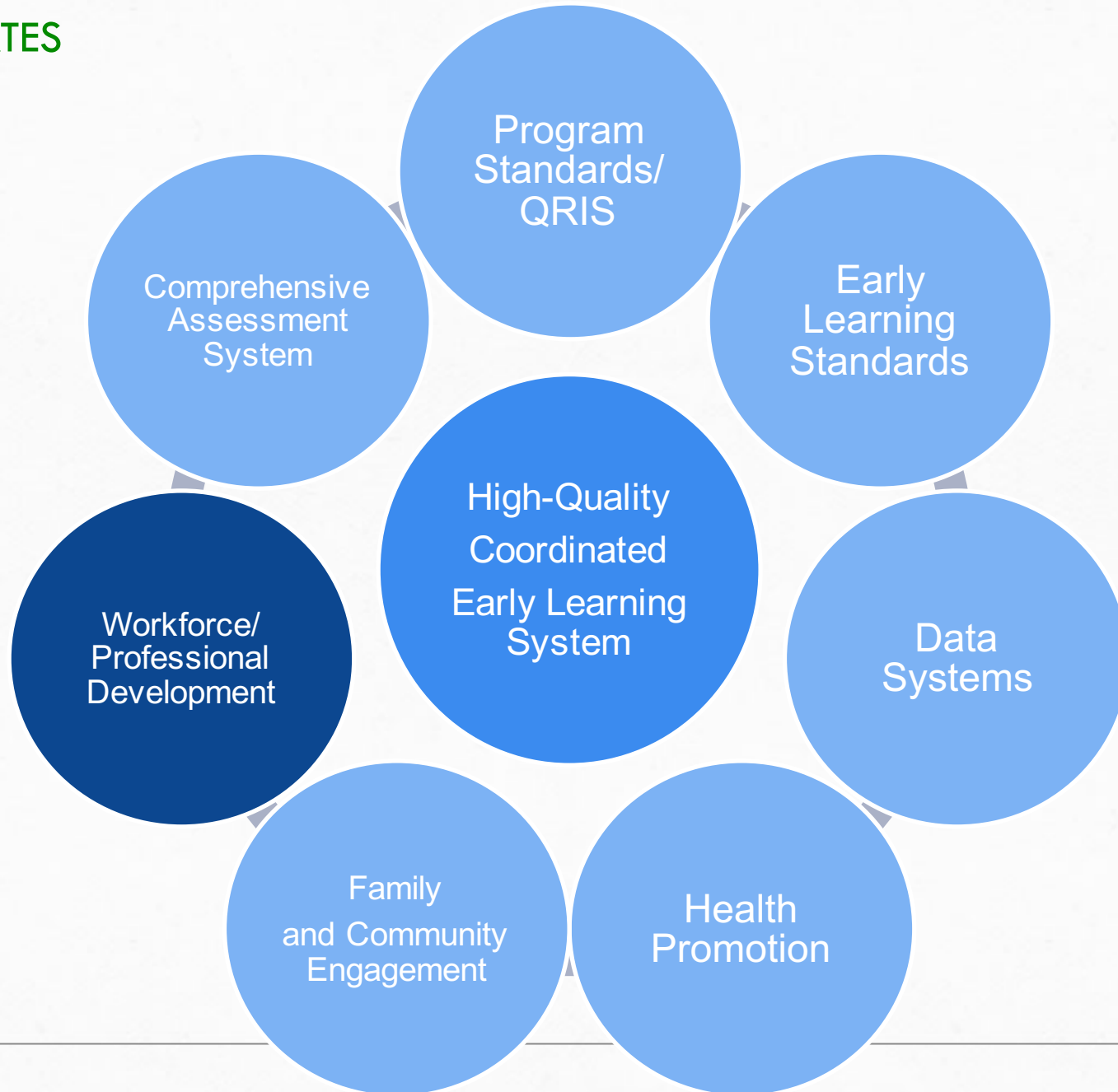
# STRATEGIC PLAN 2011-14 & 2014-18

## EARLY LEARNING



# EARLY LEARNING CHALLENGE

20 STATES





# PRESCHOOL DEVELOPMENT GRANTS

## 12 COMPONENTS OF HIGH-QUALITY PRESCHOOL

1. High staff qualifications
2. High-quality professional development for all staff
3. Child-to-instructional staff ratio of no more than 10 to 1
4. Class size of no more than 20
5. Full-Day program
6. Inclusion of children with disabilities
7. Developmentally appropriate, culturally and linguistically responsive instruction
8. Individualized accommodations and supports
9. Comparable salaries
10. Program evaluation to ensure continuous improvement
11. Comprehensive Services
12. Evidence-based health and safety standards



# JOINT ED/HHS POLICY STATEMENTS

## PUBLIC INPUT

- **Suspension and expulsion (2014)**
- **Inclusion of Children with Disabilities (2015)**
- **Family Engagement (2016)**
- **Dual Language Learners (2016)**
- **Health Promotion (Fall, 2016)**
- **Technology for Young Children (Fall, 2016)**



# HELPING TO MOBILIZE AN EFFECTIVE ECE WORKFORCE

- **ED/HHS Joint Policy Statements**
  - Suspension and expulsion (2014)
  - Inclusion of Children with Disabilities (2015)
  - Family Engagement (2016)
  - Dual Language Learners (2016)
- My Brother's Keeper – Reducing Suspension & Expulsions
- Every Student, Every Day – Reducing Chronic Absenteeism
- Teach to Lead
- \$25 million Early Learning Network – P-3



# EVERY STUDENT SUCCEEDS ACT (ESSA)

REAUTHORIZES THE ELEMENTARY AND SECONDARY EDUCATION ACT (ESEA)







**THANK YOU!**

**[steven.hicks@ed.gov](mailto:steven.hicks@ed.gov)**

**Join our list serv at [www.ed.gov/early-learning](http://www.ed.gov/early-learning)**

**20,000 Subscribers**

