

Early Childhood TA Connections:

Connecting CEELO and Regional Comprehensive Centers

SEPTEMBER 15, 2014



Logistics

- Dial +1 (415) 655-0053
Access Code: 174-819-388#
- All attendees will be in listen only mode
- Questions or comments can be entered in the question box at any time.
- The webinar will be recorded as audio archive
- Technical problems- email Michelle Horowitz at mhorowitz@nieer.org



Agenda

- Introductions
- CEELO Year 2 and Plans for Year 3
- Experience of One Regional Center
- Regional Round-up
- EC TA Providers- A Congested Field
- Requests for Collaboration
- Looking Ahead



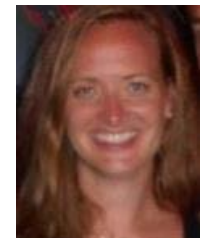
CEELO Leadership Team

- W. Steven Barnett, NIEER, Principal Investigator
- Lori Connors-Tadros, NIEER, Project Director
- Jana Martella, EDC, Project Co-Director
- Tom Schultz, CCSSO
- Diane Schilder, EDC
- Jim Squires, NIEER



CEELO Research & Support

- Shannon Ayers, NIEER
- Milagros Nores, NIEER
- Kirsty Brown, NIEER
- Megan Carolan, NIEER
- Michelle Horowitz, NIEER
- Melissa Dahlin, EDC
- Katie Carroll, CCSSO



Regional Centers



CEELO's Charge: Increase the capacity of all SEAs (and territories) to implement comprehensive and aligned early learning systems

Strengthen
Birth-3rd Policies
and Practices

Using Data to
Improve
Instruction

Comprehensive
Assessment
Systems

Increase
Workforce
Knowledge
and Skills

Increase
Coordination
Across State
Systems



Developments in 2013- 2014

“Improving the Quality of Teaching from Birth – Third Grade”

- CEELO Roundtable
- FastFacts and Policy Briefs
- Webinars
- Facilitated TA for states and RCCs
- Partnered with other national centers
- Chief’s P – 3 Summits
- CEELO newsletter
- National Advisory Board



Plans for 2014 - 2015

- Leadership Academy
- Support for Preschool Development Grants
- Strategic TA
- Responsive TA
- PLCs
- National Roundtable
- Product Development/Publications



Looking Back, Looking Ahead: The Experience of One RCC EC Lead

Sarah Hughes

Northeast Comprehensive Center



- Needs sensing
- Critical relationships
- Key activities
- Lessons learned
- Challenges/Opportunities





NORTHEAST COMPREHENSIVE CENTER

Early Learning NCC

CEELO Regional Comprehensive Center Early Learning Connections

September 15, 2014



Agenda

- Overview of NCC regional and state activities
- Illustration of state-specific work in Maine (video presentation)
- Reflections and lessons learned
- Discussion



NCC Regional and State Activities

Assessing TA Needs

- Build on existing opportunities
- Follow-up and one-to one contact

Establishing Relationships

- Take a collaborative approach
- Meet people where they are and focus response

Tailoring Approaches

- State-specific focus and priorities
- Facilitate cross-state sharing



NCC Regional and State Activities (cont.)



System of support (preschool program quality standards, continuous program improvement)



Prekindergarten learning standards (understanding and implementation)



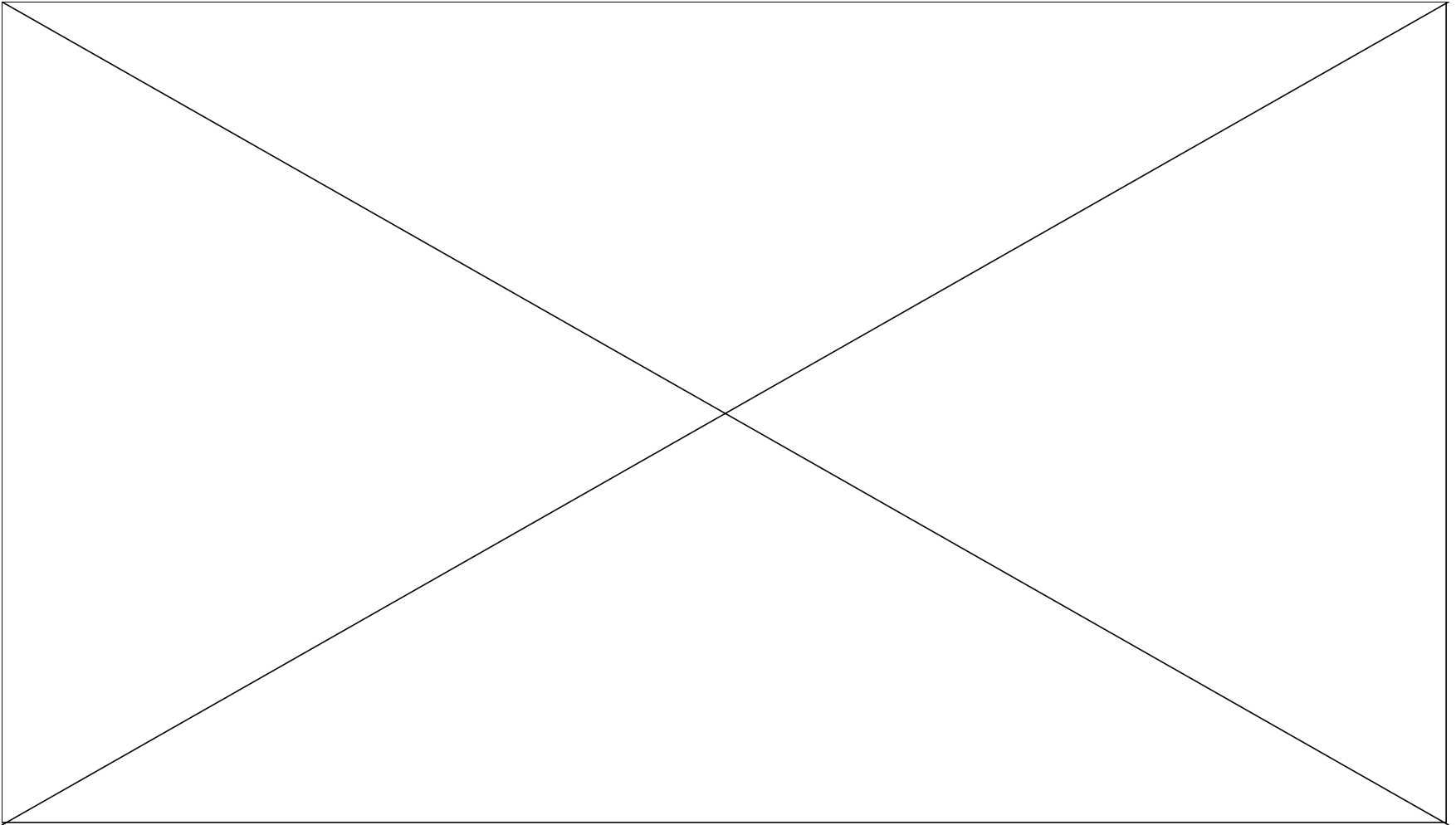
K-3rd vision (high quality instructional practice, DAP)



Cross-agency pilot



Video Presentation: Collaborative TA in Maine



Reflections, Lessons Learned and Discussion





NORTHEAST COMPREHENSIVE CENTER

Thank you.

Regional Center Round-up



FEDERALLY FUNDED ECE TA ORGANIZATIONS

- o Center on Enhancing Early Learning Outcomes Comprehensive Center (CEELO)
- O Early Learning Challenge TA Program
- o Center for the Individuals with Disabilities Education Act (IDEA) Early Childhood Data Systems (DaSy)
- o Child Care State Systems Specialist Network
- o Early Childhood Personnel TA Center
- o Early Childhood TA Center
- o Early Head Start National Resource Center
- o Education Data Technical Assistance Program
- o Head Start State T/TA Centers, Regions 1 to 10
- o Healthy Child Care America
- o Maternal and Infant Early Childhood Home Visiting Technical Assistance
- o National Center on Child Care Data and Technology
- o National Center on Child Care Professional Development Systems and Workforce Initiatives
- o National Center on Child Care Quality Improvement
- o National Center on Child Care Subsidy Innovations and Accountability
- o National Center on Cultural and Linguistic Responsiveness
- o National Center on Health
- o National Center on Parent, Family, and Community Engagement
- o National Center on Program Management and Fiscal Operations
- o National Center on Quality Teaching and Learning
- o National Center on Tribal Child Care Implementation and Innovation
- o National Resource Center for Health and Safety in Child Care and Early Education
- o National TA Center for Children's Mental Health
- o Privacy TA Center
- o Project Launch Technical Assistance Center
- O Regional Comprehensive Centers
- o Regional Education Laboratories Coordinating Entity
- o TA Partnership for Child/Family Mental Health
- o The ALLIANCE National Parent Technical Assistance Center (NPTAC)
- o Tribal Home Visiting Technical Assistance Center



PRIVATELY-FUNDED TA ORGANIZATIONS

- Alliance for Early Success
- BUILD
- Center for Law and Social Policy (CLASP)
- Center for the Study of Social Policy – Strengthening Families Initiative
- Council of Chief State School Officers (CCSSO)
- Early Childhood Data Collaborative
- Early Learning Challenge Collaborative
- The Finance Project
- National Governors Association
- Ounce of Prevention Fund
- Quality Rating and Improvement System National Learning Network
- Zero to Three



Connections with CEELO and RCC Early Childhood Partners



Looking Ahead

- CEELO Updates
 - Website
 - Leadership Academy
 - National Roundtable
 - Up-coming events
 - Contribute to newsletter
 - Focus areas
- Future CEELO-RCC conference calls
- Final Thoughts





CEELO

Center on Enhancing
Early Learning Outcomes



www.ceelo.org

info@ceelo.org

THANK YOU!

