



EARLY LEARNING AT THE U.S. DEPARTMENT OF EDUCATION

2015 ROUNDTABLE
JUNE 6, 2015

STEVEN HICKS, SENIOR POLICY ADVISOR
OFFICE OF EARLY LEARNING
US DEPARTMENT OF EDUCATION

Humility

Empathy

Courage





“I believe that every single child deserves the opportunity for a strong start in life through high-quality preschool, and expanding those opportunities must be part of ESEA.”

U.S. Secretary of Education Arne Duncan

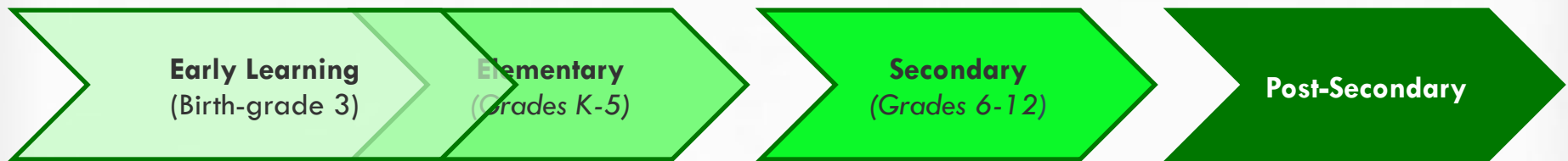




EARLY LEARNING AT ED

A CRADLE-TO-CAREER CONTINUUM

Improve the health, social-emotional, and cognitive outcomes for all children from birth through 3rd grade, especially those with high needs





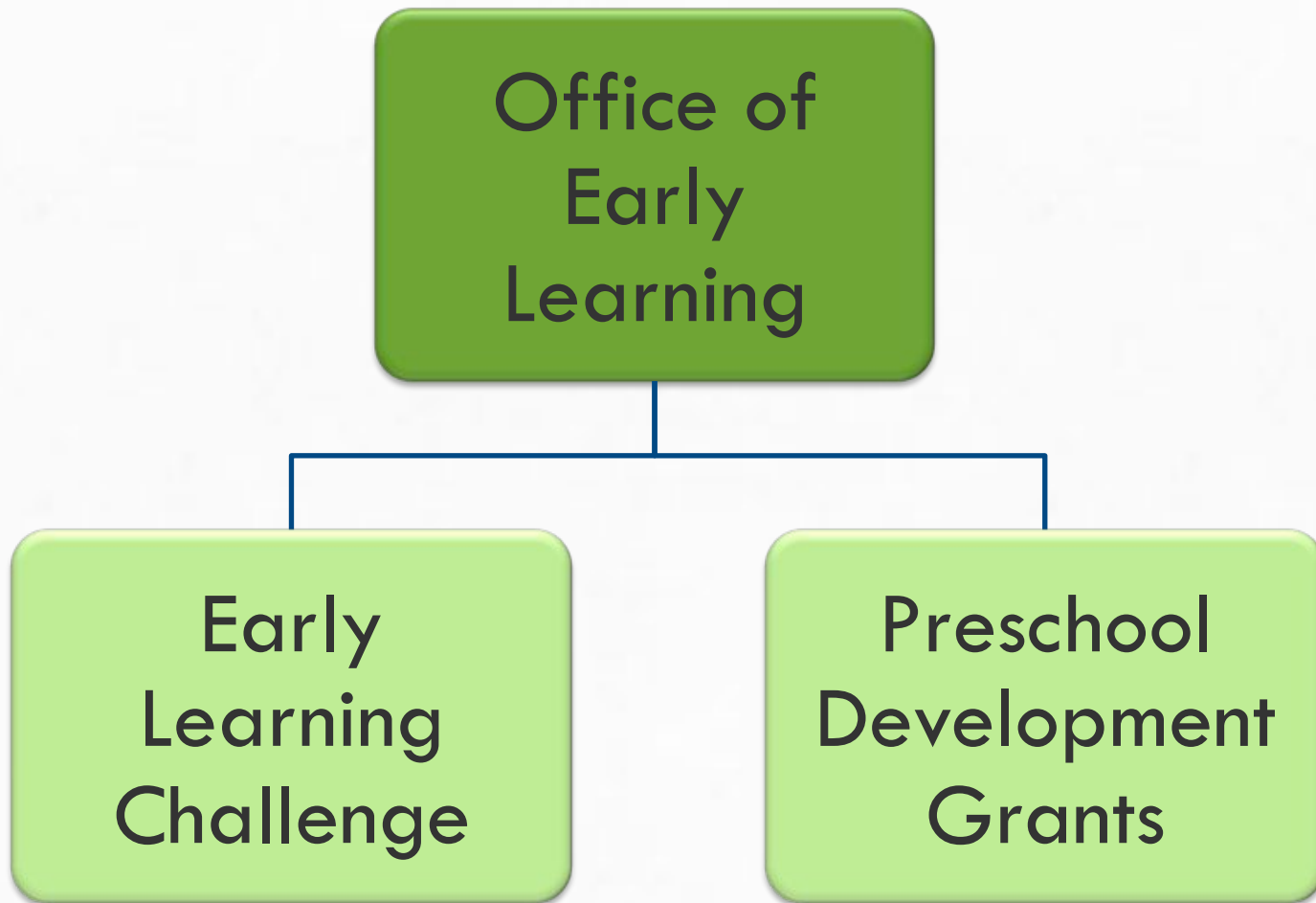
STRATEGIC PLAN

EARLY LEARNING



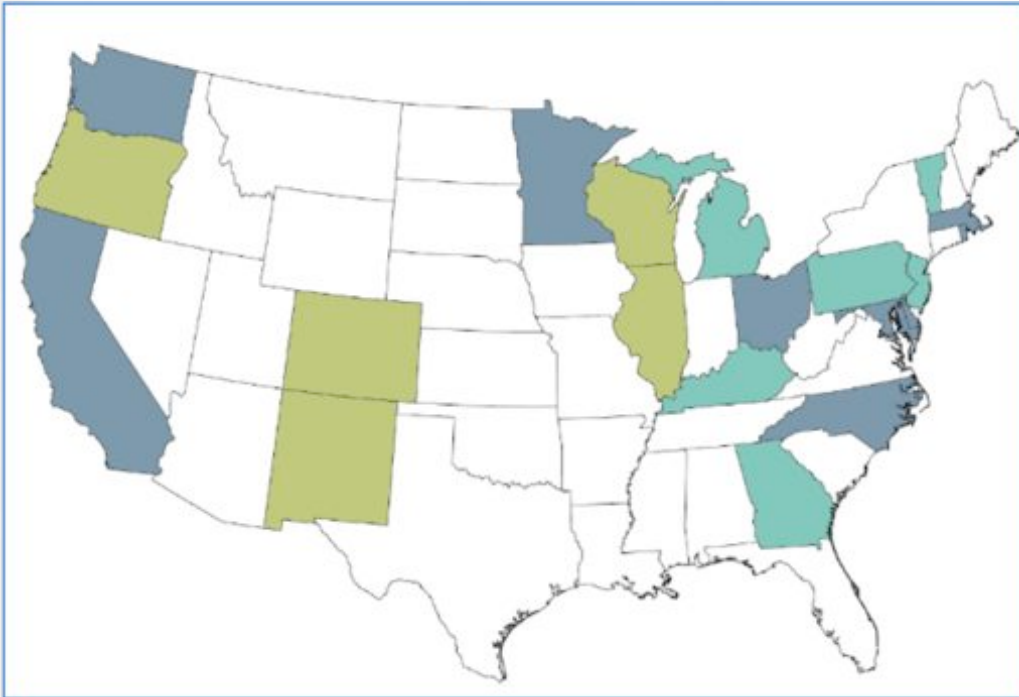
OFFICE OF EARLY LEARNING

OVER \$2 BILLION



EARLY LEARNING CHALLENGE

20 STATES



1

Phase 1

California
Delaware
Massachusetts
Maryland
Minnesota
North Carolina
Ohio
Rhode Island
Washington

2

Phase 2

Colorado
Illinois
New Mexico
Oregon
Wisconsin

3

Phase 3

Georgia
Kentucky
Michigan
New Jersey
Pennsylvania
Vermont



RTT-ELC ANNUAL PERFORMANCE REPORTS

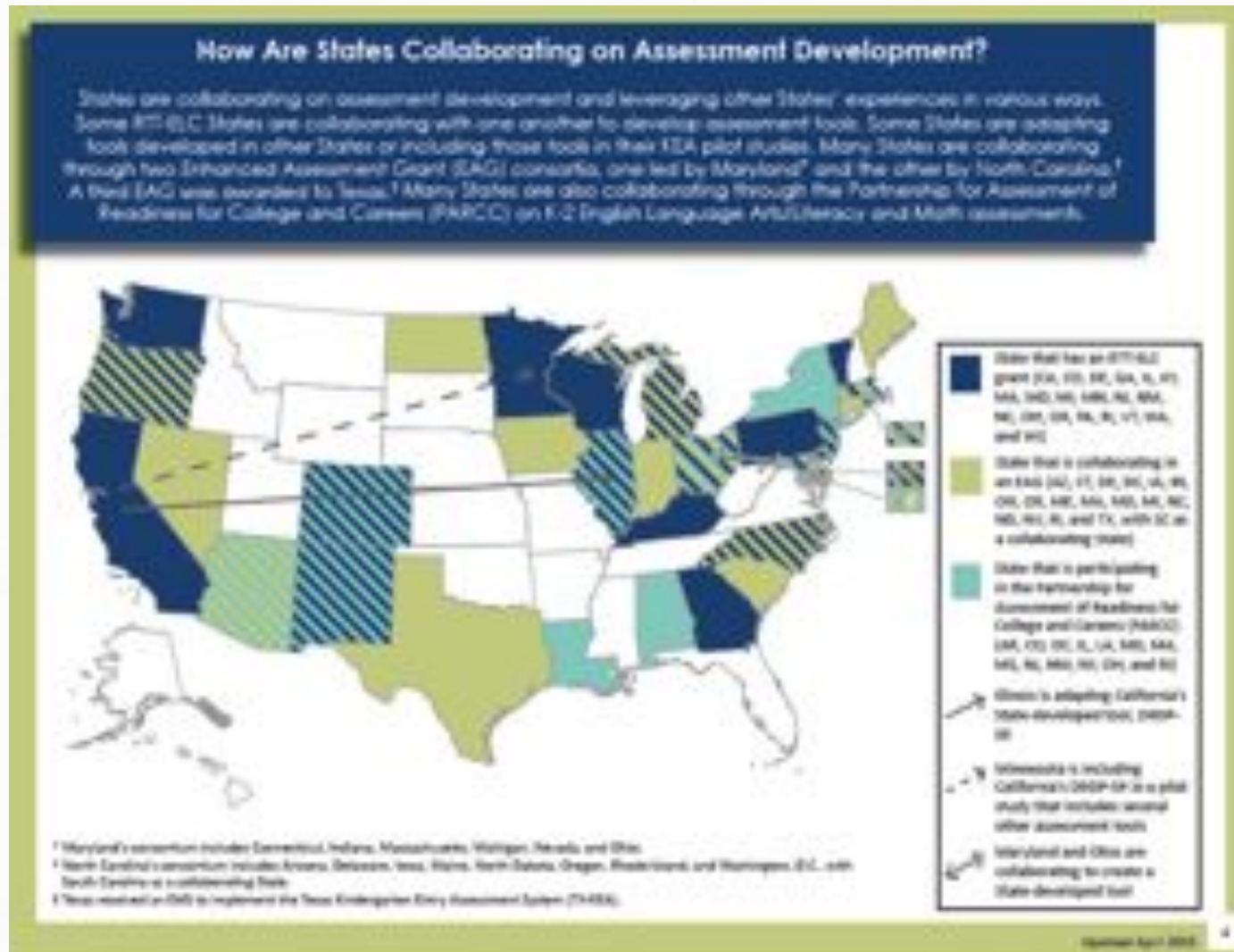
TO BE RELEASED SUMMER, 2015

- RTT-ELC Grantees are making great progress. Across the 20 RTT-ELC States combined –
 - 200,360 children with high needs were enrolled in State-funded preschool programs that were in the top tiers of the states' TQRIS (a 176% increase from the start of their grants)
 - 228,780 children were enrolled in top tier CCDF-programs (a 75% increase)
 - 151,676 children were enrolled in top tier Early Head Start and Head Start programs (a 107% increase)



ENHANCED ASSESSMENT GRANTS

EXPANDING KINDERGARTEN ENTRY ASSESSMENTS





PRESCHOOL DEVELOPMENT GRANTS

18 STATES



States Recommended for Funding for FY 2014 Preschool Development Grants

■ States Recommended for Funding for FY 2014 Preschool Development Grants -- Development Grants

■ States Recommended for Funding for FY 2014 Preschool Development Grants -- Expansion Grants

DEFINING HIGH-QUALITY

12 COMPONENTS

1. High staff qualifications
2. High-quality professional development for all staff
3. Child-to-instructional staff ratio of no more than 10 to 1
4. Class size of no more than 20
5. Full-Day program
6. Inclusion of children with disabilities
7. Developmentally appropriate, culturally and linguistically responsive instruction
8. Individualized accommodations and supports
9. Comparable salaries
10. Program evaluation to ensure continuous improvement
11. Comprehensive Services
12. Evidence-based health and safety standards



EARLY LEARNING TURNAROUND MODEL

KEY COMPONENTS

1. Full Day Kindergarten and High-Quality Preschool
2. Joint planning across P-3 grades
3. New principal as early learning leader
4. Implement evaluation & support systems for teachers and principals
5. Identify and reward school leaders, teachers, and other staff
6. Recruit, retain, and reward excellent staff
7. Research-based, developmentally appropriate, and vertically aligned instructional program across multiple domains
8. Use data to inform and differentiate instruction
9. Job-embedded, intensive, ongoing professional development



POLICY STATEMENTS

PUBLIC INPUT

- Suspension and expulsion (released December, 2014)
- Inclusion (in progress)
- Family (in progress)
- Health (in progress)
- Comprehensive Assessment Systems (in progress)

STUDIES & RESEARCH

TO ADVANCE THE FIELD

- Studies
 - National Academies of Science
 - *Transforming the Workforce for Children Birth Through Age 8: A Unifying Foundation* (Spring, 2015)
 - *Supporting the Parents of Young Children* (2016)
 - *Fostering Early Learning and Academic Success for all ELs & DLLs: Research to Inform Practice* (2016)
 - ED/HHS
 - TQRIS Evaluation
 - P-3 Sustaining Effects
 - KEA
 - ECE Apprenticeships
- Early Learning Research Network
- Parent Toolkit





“Research shows that one of the best investments we can make in a child’s life is high-quality early education.”

President Barack Obama

TOP PRIORITIES WITH CONGRESS



ESEA REAUTHORIZATION

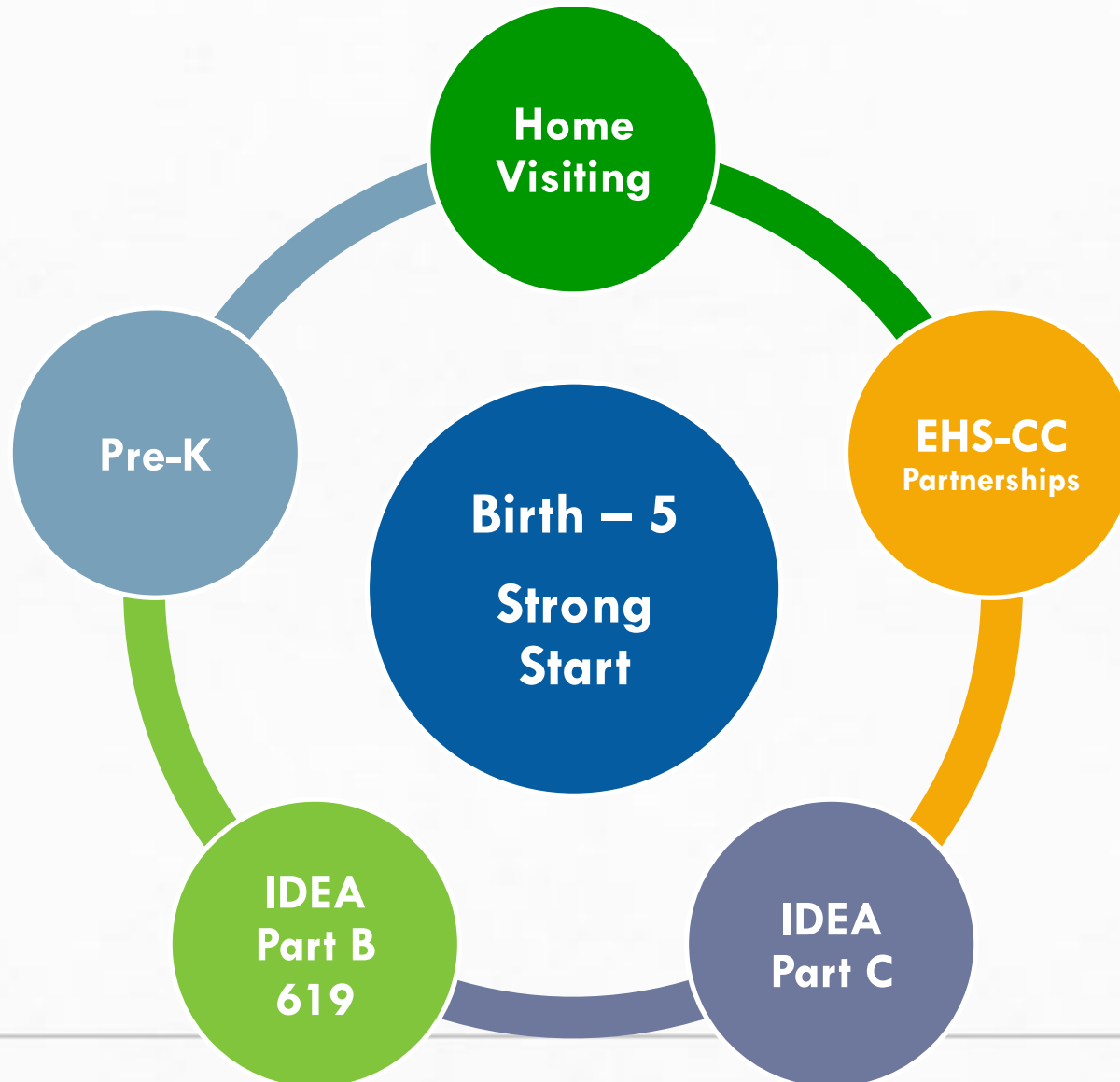
INCLUDING EARLY LEARNING

- Senate bipartisan effort/ House...
- New early childhood education amendment -for coordination, alignment and early childhood education
- New specific mentions of support for early childhood education and/or preschool age children in Titles II, IV, V, and X
- Retains allowable use of Title I for early childhood education through school wide and targeted assistance programs



STRONG START FOR AMERICA'S CHILDREN

REINTRODUCED IN 114TH CONGRESS



FY 2016 BUDGET

PRESCHOOL FOR ALL



- **Preschool For All**
 - \$75 billion over 10 years and \$1.3 million in the first year.
- **Preschool Development Grants**
 - \$750 million, an increase of \$500 million
- **IDEA – Special Education**
 - Part C - \$503.6 million, an increase of \$65 million
 - Part B, 619 - \$403.2 million, and increase of \$50 million
- **Title 1**
 - \$15.4 billion, an increase of \$1 billion



WHITE HOUSE INITIATIVES

NOT SLOWING DOWN

- White House Summit on Early Education in December, 2014
 - Invest in US
 - Early Learning Communities
- My Brother's Keeper
- Bridging the Word Gap
- Task Force on New Americans





THANK YOU!



steven.hicks@ed.gov

[Join our list serv at www.ed.gov/early-learning](http://www.ed.gov/early-learning)

Breakout One

1. Building Diverse Leaders – a facilitated discussion
 - How can states encourage diversity in the early childhood leadership corps, including cultural, linguistic, and economic diversity?
2. Digging Into Systems Thinking – Continued Discussion with Tracy Benson
3. Data Driven Leadership – What are the data systems needed for policy leaders to push their agenda forward?