

FORMATIVE ASSESSMENT PEER LEARNING COMMUNITY



Tuesday, July 15, 2014, 2:00 – 3:00 p.m. (EST)

Center on Enhancing Early Learning Outcomes

Early Childhood TA Center (ECTA)

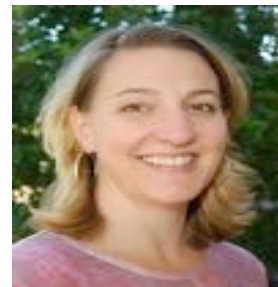
Please dial in: 888-394-8197 Passcode:725-932-5044#

Questions and Comments

- **We will be recording this call**
 - **When you are not speaking please mute your phones:**
 - To Mute or Unmute **Press *6**
 - Please do not put your phones on 'Hold'
 - **To ask a question or make a comment:**
 - Take your phone off mute (*6) and tell us your name and state, or
 - Type a comment/question in the chat box
-

Facilitators

- Kirsty Clarke Brown, Ph.D., Policy and Communications Advisor, CEELO/NIEER
- Kathi Gillaspay, M.Ed., Technical Assistance Specialist, ECTA/DaSy



Presenters: Using FA Data



Barbara Bracco
Preschool Teacher
Cliffside Park School District, NJ



Kathleen Dering
Principal, Elliott Elementary
School
Lincoln, NE



Upcoming Survey

- We will be sending out a Survey Monkey link after this call to ask about your overall experience with the FA PLC
- We ask you to respond thoughtfully, and before August 1
- We will compile results, and have them available for the August 19th call to discuss future directions for this PLC.



Also coming up...

Next month's call:

August 19, 2 pm EST

Topic:

**Discussing our Peer Learning Community:
Our direction and survey results**

Later this week a **Fast Fact on Peer Learning Communities** will be added to resources on CEELO.org

Contact Information

Kirsty Clarke Brown: kbrown@nieer.org



Kathi Gillaspy: kathi.gillaspy@unc.edu

