

# CEELO FASTfacts

TOPIC: BIRTH - 3RD GRADE ALIGNMENT

AUGUST 2013

## Support for Preparing Race to the Top-Early Learning Challenge Grant Applications and Funding to Support State Curriculum Alignment Project

*The next round application for the Race to the Top - Early Learning Challenge was issued by the US Department of Education on August 30.*

### Related materials and application can be found at:

<http://www2.ed.gov/programs/racetothetop-earlylearningchallenge/index.html>

**Information Request:** This state's Department of Education is seeking information to support their development of a Race to the Top-Early Learning Challenge Grant (RTT-ELC) application. Separately, the state is seeking information about foundations or funds that could assist with the state's curriculum alignment project.

**State's Goal:** 1)The state is seeking resources to be well positioned for the next round of RTT-ELC grants; 2) The state is seeking resources to support a curriculum alignment project.

**Background and Context:** The state previously applied for RTT-ELC funds and was not successful. The state hopes to make change to address issues with the previous application. Separately, the state has approached an external consultant to facilitate the process of examining the vertical and horizontal alignment of the curriculum and does not have the funding to support the full costs of the project.

**Response:** We begin our response by focusing on the question of resources to support the preparation of the RTT-ELC application. We then provide an example of potential resources to support the state curriculum alignment project.

### What we know about RTT-ELC Resources:

- Race to the Top-Early Learning Challenge (RTT-ELC) has prompted many states to reexamine governance structures to coordinate early childhood programs. As governance is a critical component of the application, it is important for SEAs to consider effective governance structures.
- State RTT-ELC applications are available to the public. (Graphics from RTT-ELC applications illustrating the governance structure are presented on pages 4-12 of this response State education agencies (SEAS) interested in accessing these should contact ceelo.org for the link to the drop box.)
- The Early Learning Challenge Collaborative offers a platform for states to share experiences in preparing for the RTT-ELC proposal.
- BUILD offers resources to states preparing applications.
- NAEYC offers a resource to help states prepare for the challenge.
- The Ounce of Prevention has conducted an in depth analysis of applications submitted to date.
- Zero to Three has compiled a resource list of materials to support those preparing for the challenge.

### INFORMATION REQUEST

State's Goal

Background and  
Context

Response

Resources

Next Steps

## Resources

### **Early Learning Challenge Collaborative**

The Early Learning Challenge Collaborative offers a number of resources to states preparing Race to the Top Early Learning Challenge grant proposals. The collaborative website page with links to resources on integration is: <http://www.elccollaborative.org/systems-integration.html>

### ***Examples of selected resources that are available on the Early Learning Challenge Collaborative are:***

**The August 20 Webinar ‘If I knew then what I know now!’:** shows reflections from current ELC recipients.

Available at: <http://www.elccollaborative.org/webinar-archives/109-if-i-knew-then-what-i-know-now-reflections-from-current-rtt-elc-grantees.html>

**Building an Early Learning System:** The ABCs of Planning and Governance Structures, Charles Bruner, Michelle Stover Wright, Barbara Gebhard and Susan Hibbard, State Early Childhood Policy Technical Assistance Network and the BUILD Initiative, 2004. This paper defines an early learning system – including early learning and support for child health, family strength, and community connection. It shares important “rules of thumb” for creating the state planning and governance structures to build it.

**Building Ready States:** A Governor’s Guide to Supporting Comprehensive, High-Quality Early Childhood State Systems, National Governors Association Center for Best Practices, Rachel Demma, 2010. This report by the NGA Center offers six policy strategies governors can use to build and nurture a comprehensive, high-quality early childhood system.

Below we present key resources available from national organizations including the BUILD Initiative, the National Governor’s Association, and key consultants including Stacie Goffin. We then present graphics that were produced by states applying for Race to the Top—Early Learning Challenge grants. These graphics illustrate the existing governance structures from selected states.

### **BUILD Initiative**

The BUILD Initiative has developed a number of resources on governance that can inform states redesigning state structures to prepare for the RTT-ELC. Examples include:

***Vision to Practice:*** Setting a New Course for Early Childhood Governance, a brief on the current status of efforts to build governance for comprehensive early childhood systems, examines what has been learned from responses to the call for better early childhood governance during the past decade.

Available at: <http://www.evaluationinnovation.org/publications/vision-practice-setting-new-course-early-childhood-governance>

A Framework for Choosing a State-Level Early Childhood Governance System provides state policy leaders with a framework to consider and assess early childhood governance options. BUILD Initiative.

Available at: <http://www.buildinitiative.org/Portals/0/Uploads/Documents/Early%20Childhood%20Governance%20for%20Web.pdf>

A Framework for State Leadership and Action in Building the Components of an Early Childhood System, Bruner, C., 2011.

This brief provides an overview of exemplary state policies that contribute to each of four components of a comprehensive early childhood system – early learning; family support; special needs/early intervention; and health, mental health and nutrition. A section is also devoted to state actions that increase coordination among these four areas.

Available at: [http://www.buildinitiative.org/files/resources/Bruner\\_Four\\_Ovals.pdf](http://www.buildinitiative.org/files/resources/Bruner_Four_Ovals.pdf)

A Look at Governance Structures for Early Childhood in Six States. BUILD Initiative.

This brief provides an overview of the systems of state early childhood policy administration in Arizona, Massachusetts, North Carolina, Ohio, Pennsylvania, and Washington.

Available at: <http://www.researchconnections.org/childcare/resources/23546?q=early+childhood+governance>

National Association for the Education of Young Children (NAEYC) Resources: NAEYC has a number of online resources outline the key components of the RTT ELC application and the NAEYC resources available to support those preparing applications.

A list to the links can be found at: [https://www.naeyc.org/files/naeyc/file/policy/state/Race\\_Top\\_ELC.pdf](https://www.naeyc.org/files/naeyc/file/policy/state/Race_Top_ELC.pdf)

#### **Ounce of Prevention Fund**

The Ounce of Prevention has compiled a number of resources analyzing RTT-ELC applications.

Two examples follow:

Analysis of Race to the Top: Early Learning Challenge Application Section on Sustaining Effects Into The Early Elementary Grades, 2012. This brief highlights trends from an analysis of the 37 RTT-ELC applications. It includes trends and promising ideas from states' proposals for sustaining impacts from early childhood programs into the early elementary grades. In addition, the authors note the opportunities that state policymakers can take to strengthen their work and the brief highlights opportunities for increased collaboration with one another to address common goals and challenges. Available at: <http://www.ounceofprevention.org/national-policy/Sustaining-Effects-6-10-12.pdf>

State Policy Updates as of September 2012. This update provides a snapshot of each state in the Peer Advocate Roundtable (PAR) network's birth to five policy priorities, political challenges and opportunities, birth through eight agenda, and work on the RTT-ELC grant competition.

Available at: <http://www.ounceofprevention.org/national-policy/PAR-State-Policy-Update-Compilation-Oct-2012.pdf>

#### **Zero to Three**

Zero to Three has compiled resources to assist states preparing for the RTT-ELC.

Available at: <http://www.zerotothree.org/public-policy/state-community-policy/rtt-elc-bibliography.pdf>

### Funding Opportunities to Support State Curriculum Alignment Project

A number of foundations support early childhood policy development at the state level but we are not aware of a foundation that has supported the alignment of curriculum. Possible sources of information about foundations include the following:

**The Foundation Center** offers a database of foundations that support a variety of issues. The link is available at: <http://foundationcenter.org/>

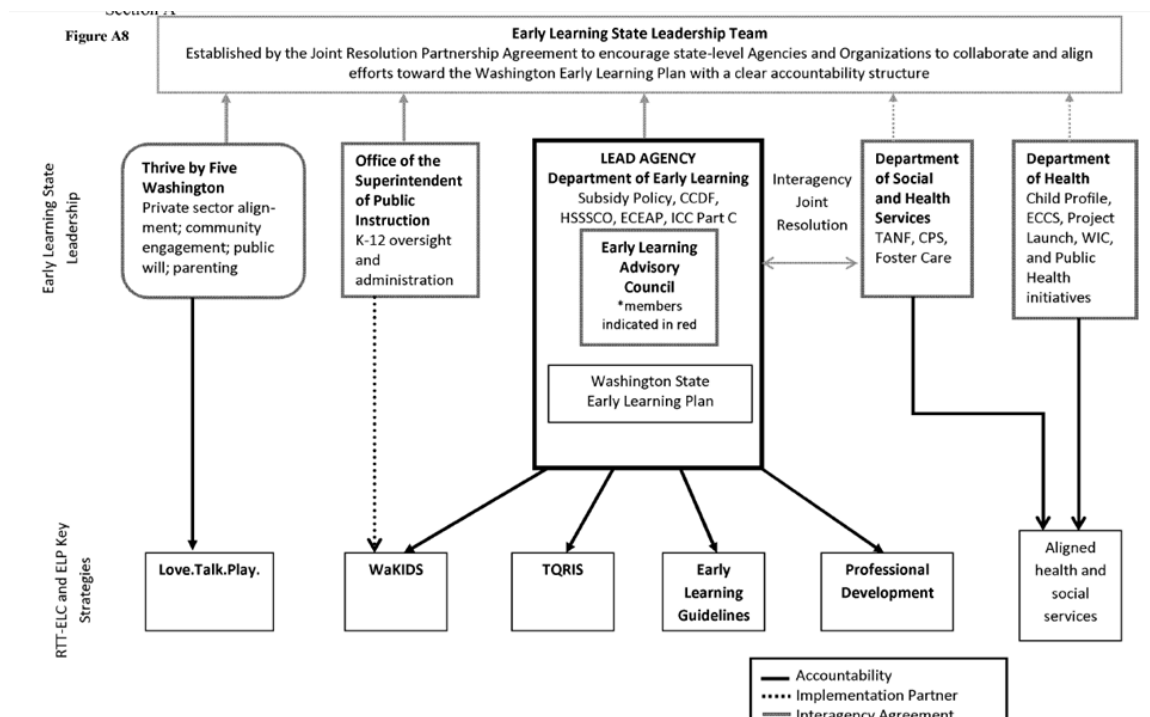
**Fundsnet** lists foundations and funding opportunities that support education in New Hampshire. Available at: <http://www.fundsnet.com/searchresult/122/New-Hampshire-Grants.html>

**Nellie Mae Education Foundation** is currently led by a former chief from New Hampshire, Nick Donohue, and the foundation has previously supported education initiatives. Available at: <http://www.nmefoundation.org>

## Next Steps

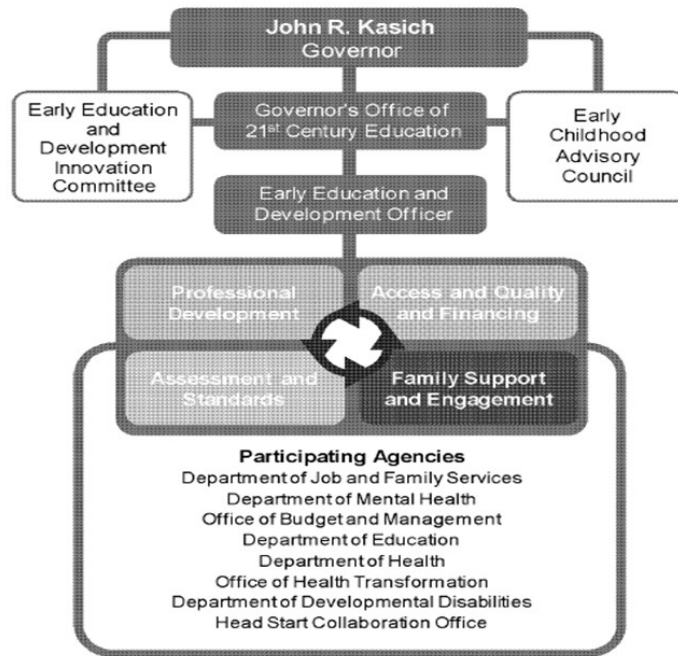
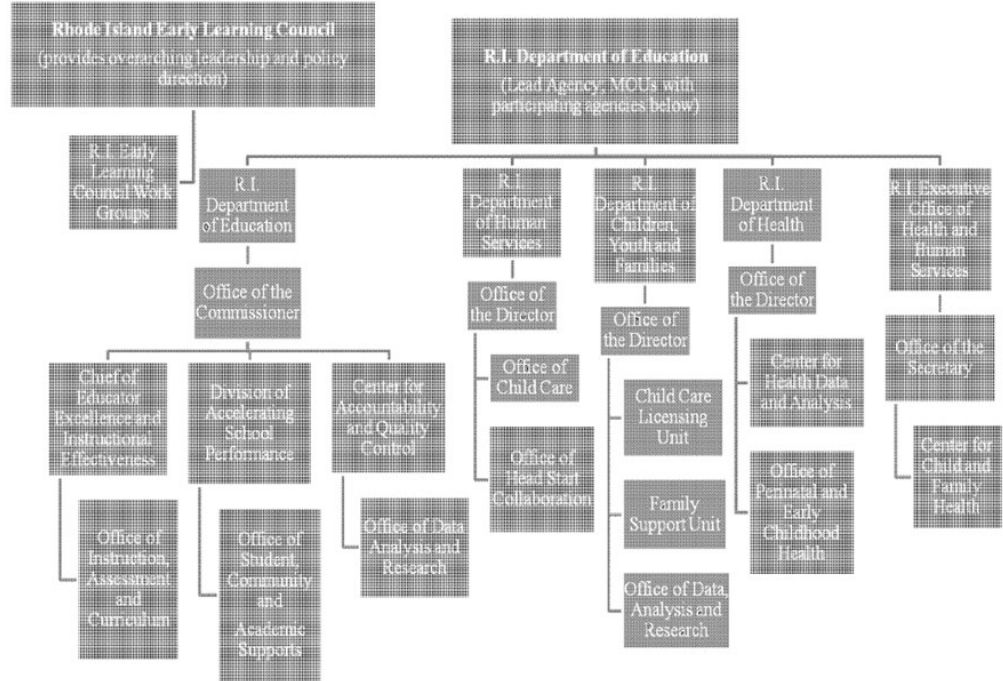
We recommend that this state reviews the resources, materials and organizational diagrams provided on pages 5-18 to determine the governance structure that best addresses the contextual issues in the state. We are then eager to follow up to offer specific recommendations and guidance to address questions that arise after reviewing these materials.

## WASHINGTON



**RHODE ISLAND**

**Rhode Island Race to the Top Early Learning Challenge Organizational Chart**

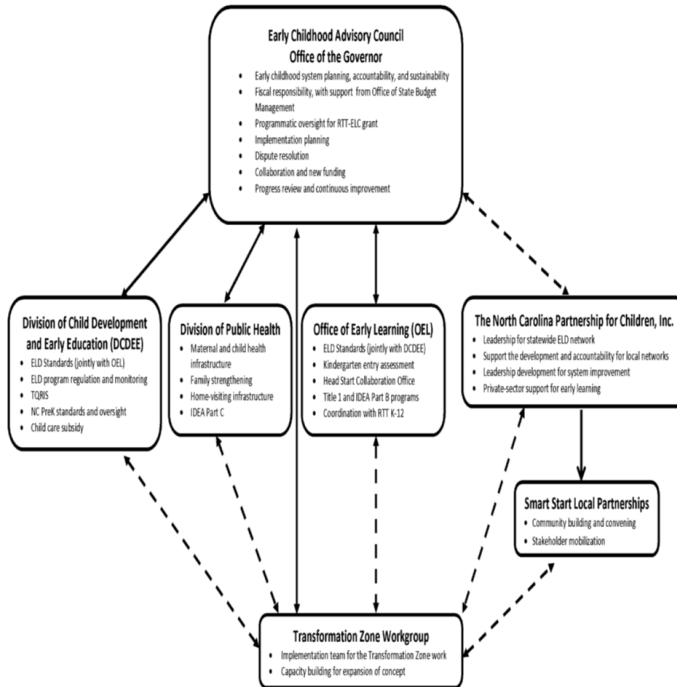


RTTELC-01

**Figure VI(A)-3. The State of Ohio's RTT-ELC governance structure ensures effective communication and decision-making.**

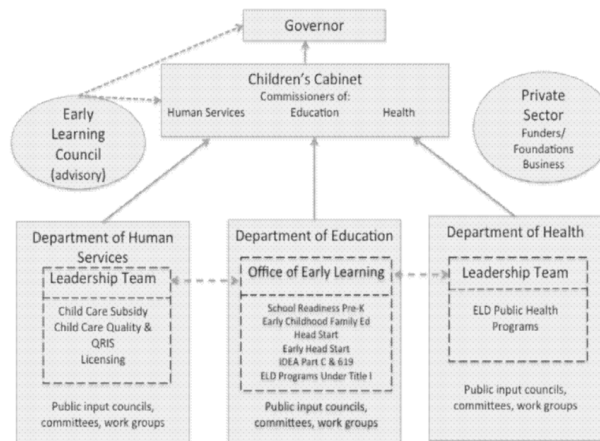
**NORTH CAROLINA**

North Carolina Race to the Top – Early Learning Challenge Governance Organizational Chart

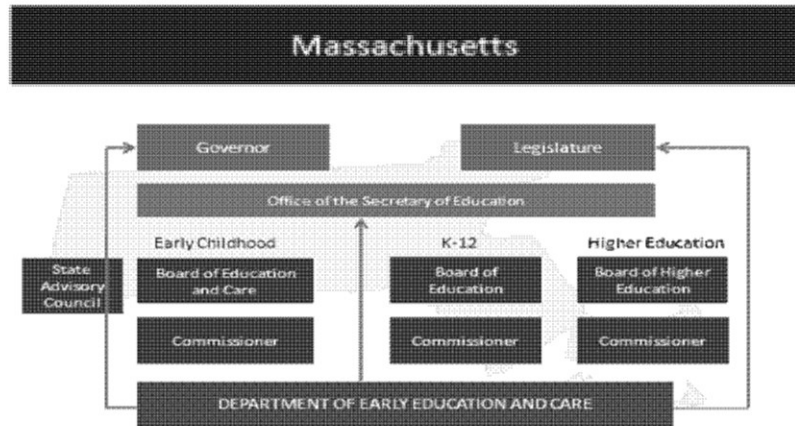


**MINNESOTA**

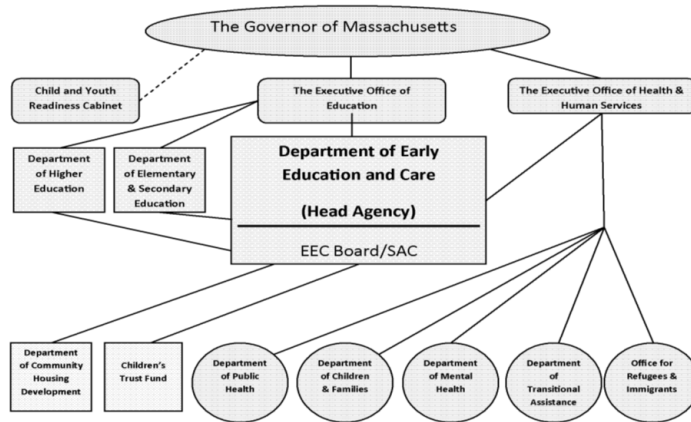
Figure A-2. Minnesota Early Learning Challenge Organizational Structure



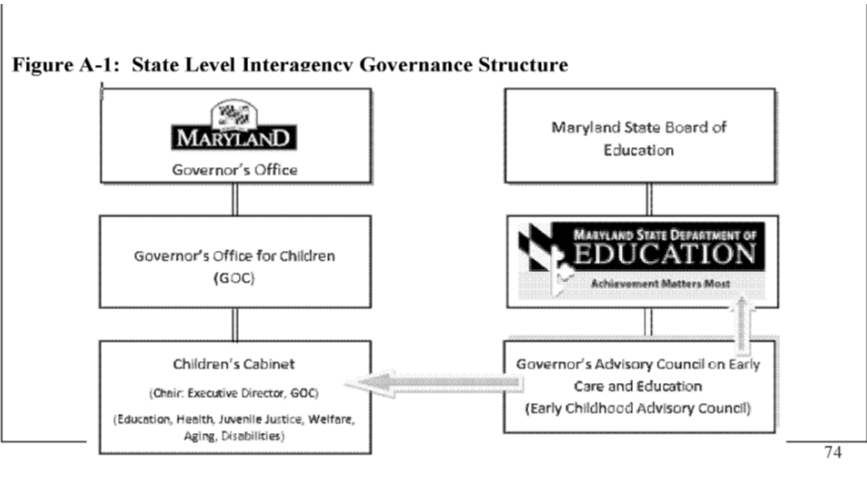
**MASSACHUSETTS**



**ORGANIZATIONAL CHART FOR GRANT MANAGEMENT**

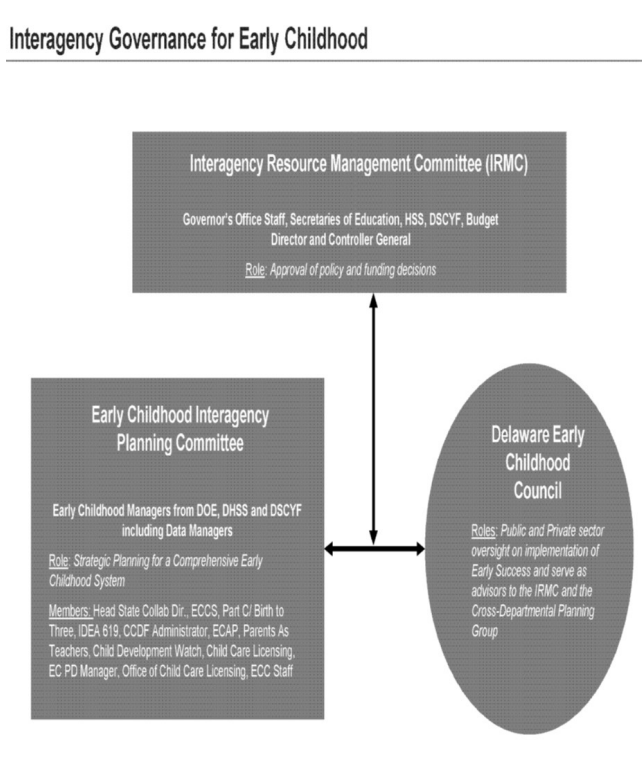


**MARYLAND**



**DELAWARE**

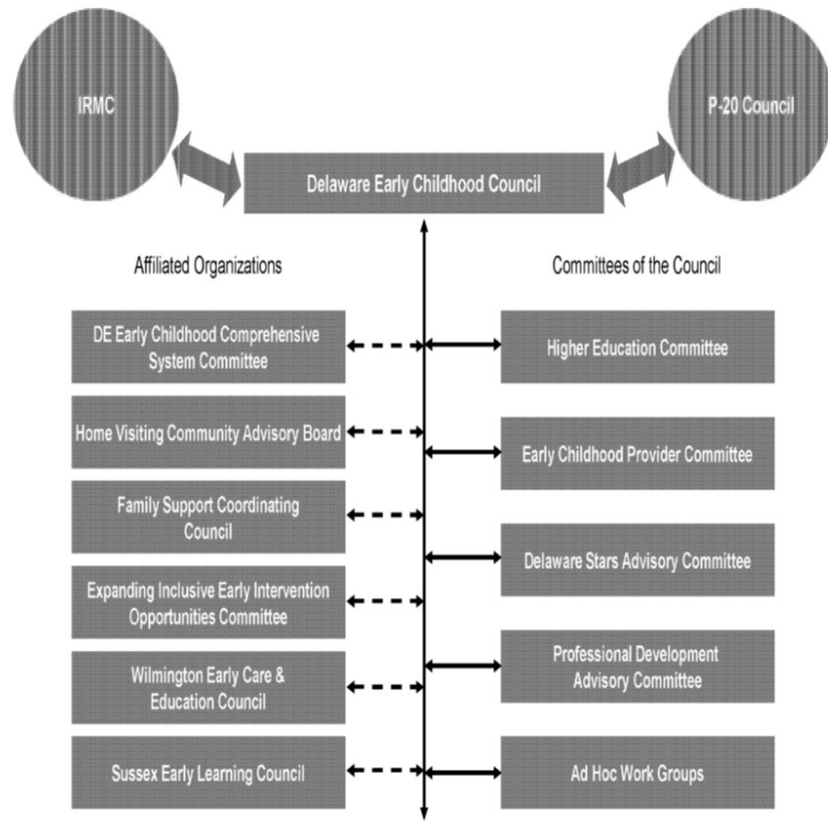
**Interagency Governance for Early Childhood**





(A)(3)-2 Early Childhood Organizational Structure

### Early Success: Delaware's Early Childhood Plan



20  
3

**CALIFORNIA**

**State of California Early Learning Challenge Organizational Chart**

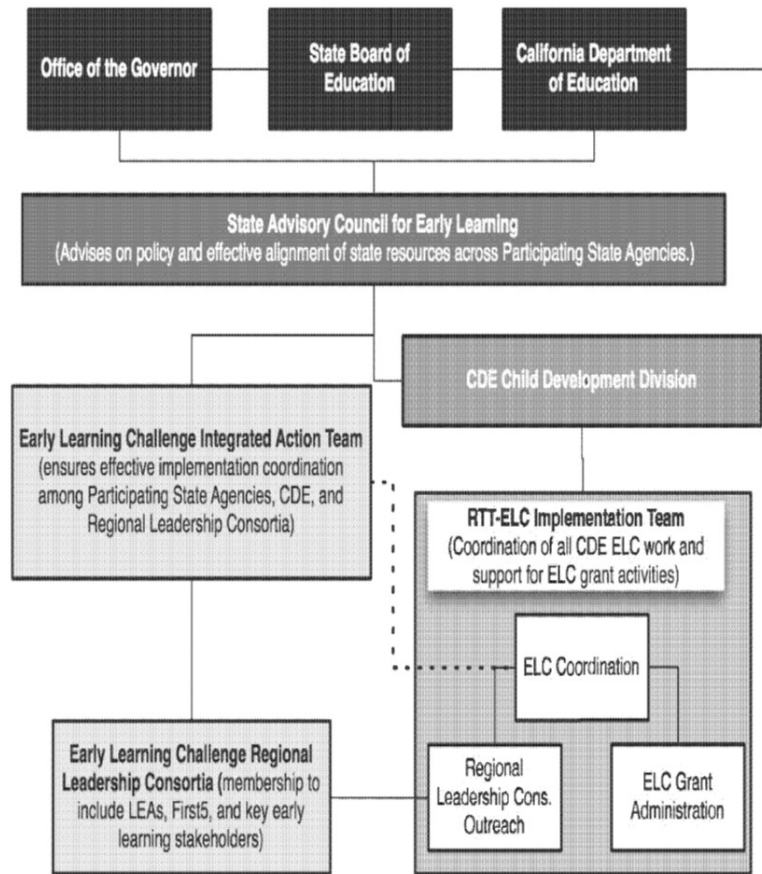
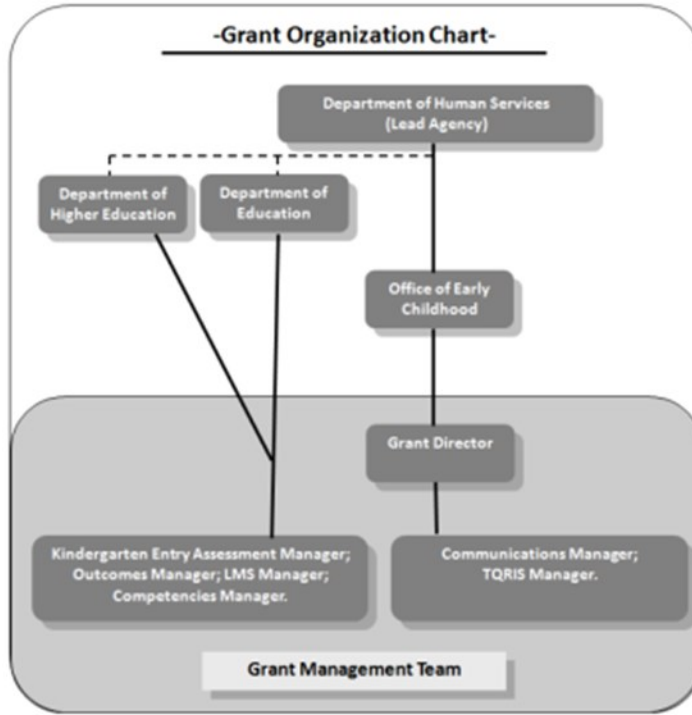
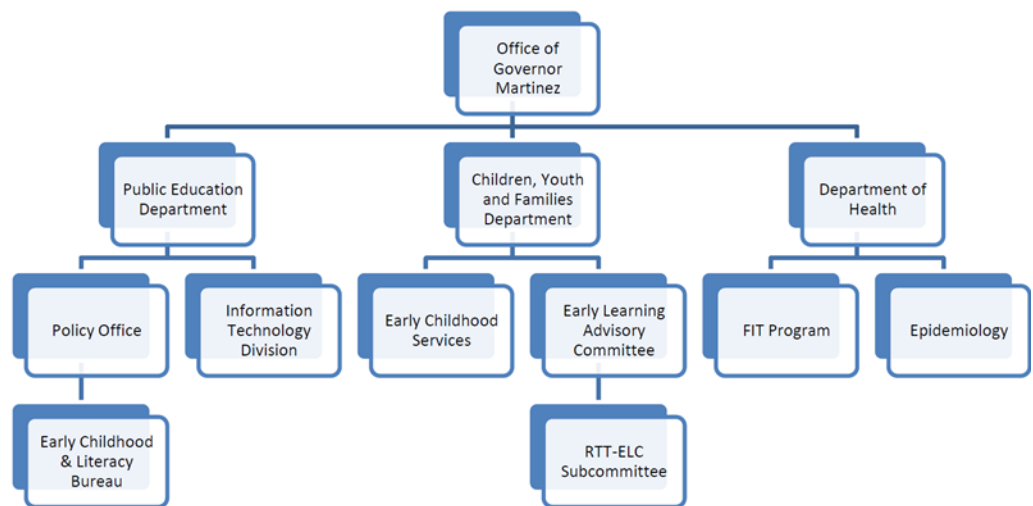


Figure 2: State of California Early Learning Challenge Organizational Chart

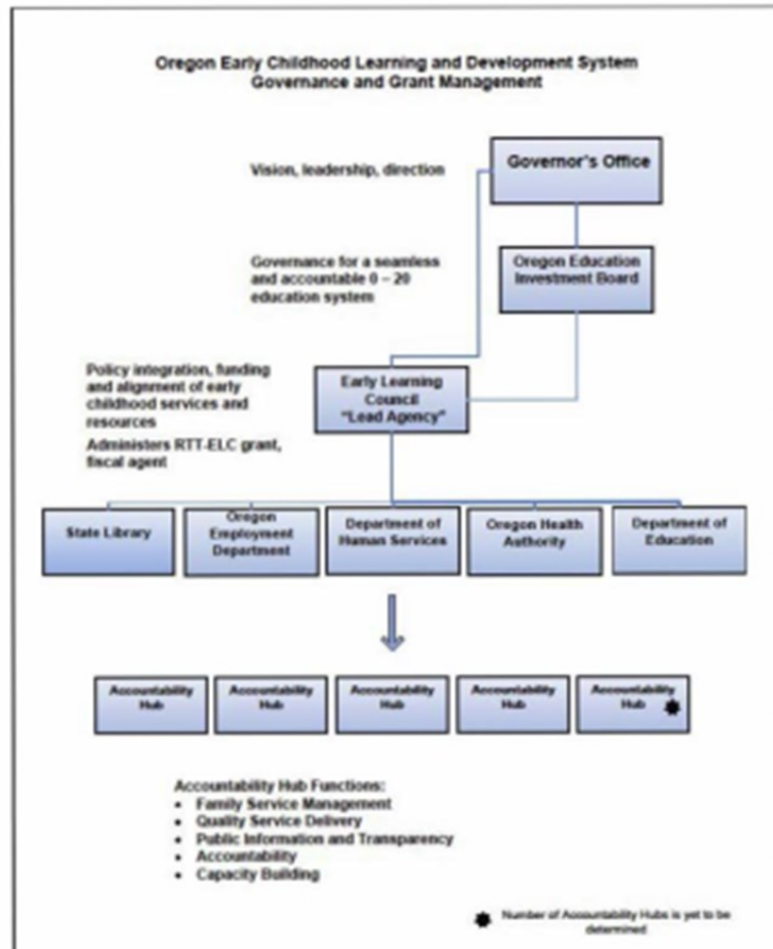
**COLORADO**



**NEW MEXICO**



**OREGON**



**Suggested citation:** Schilder, D. (2013). *Support for Preparing Race to the Top-Early Learning Challenge Grant Applications and Funding to Support State Curriculum Alignment Project*. Center on Enhancing Early Learning Outcomes. New Brunswick, NJ.



This fact sheet was originally produced in whole or in part by the Center on Enhancing Early Learning Outcomes, with funds from the U.S. Department of Education, under cooperative agreement number S283B120054. The content does not necessarily reflect the position or policy of the Department of Education, nor does mention or visual representation of trade names, commercial products, or organizations imply endorsement by the federal government.